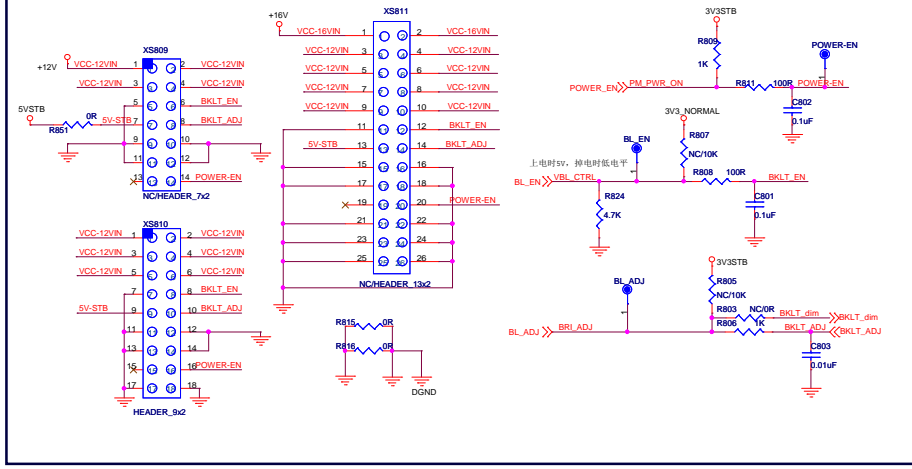
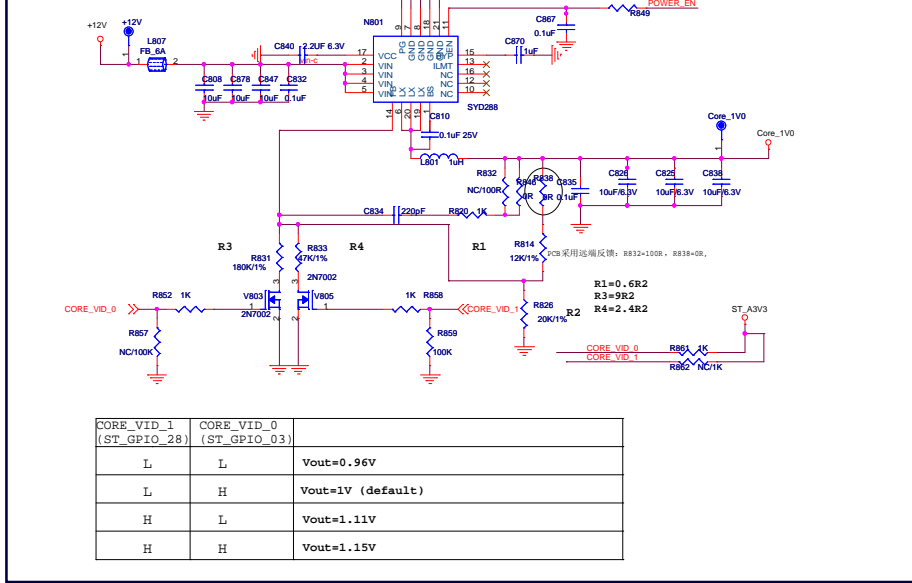


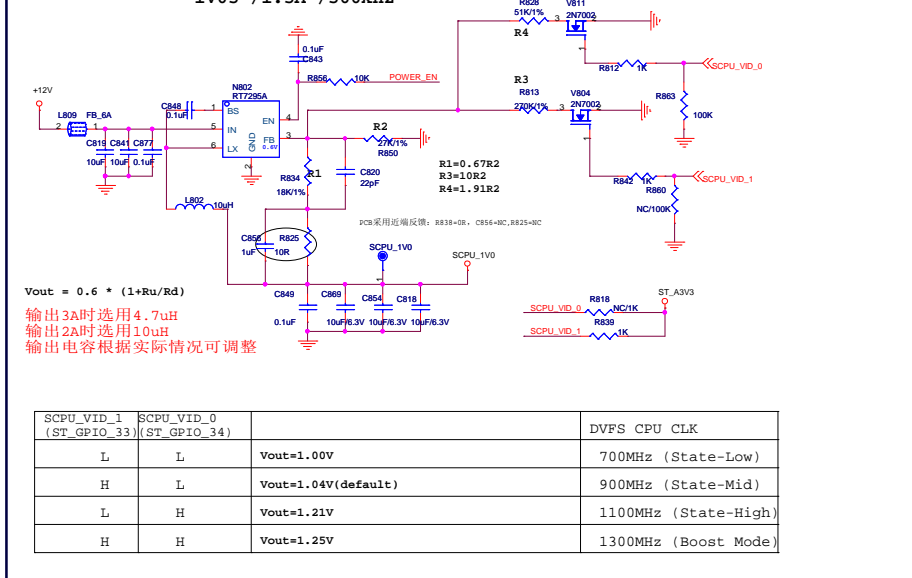
电源接口



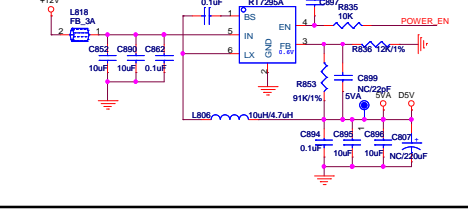
1V0-CORE



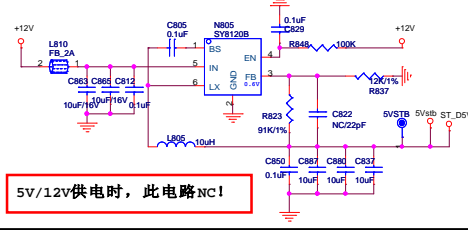
1V0-SCPU



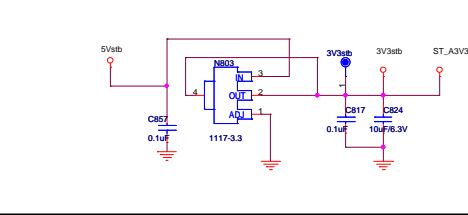
5VA



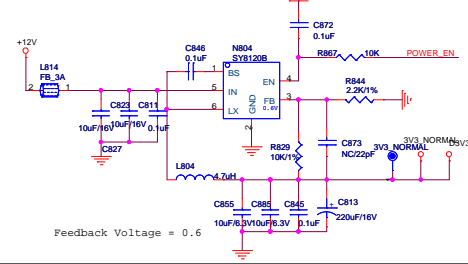
5V\_STANDBY (ST\_D5V)



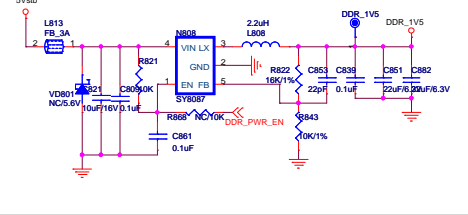
3.3V\_STANDBY (ST\_A3V3)



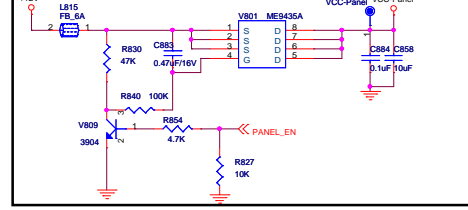
3.3V\_NORMAL(D3V3)



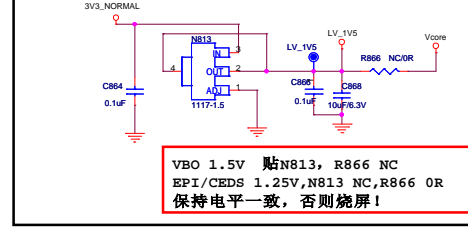
DDR3 1.5V



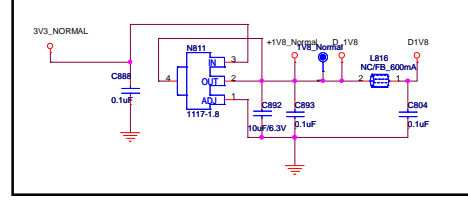
VCC-Panel



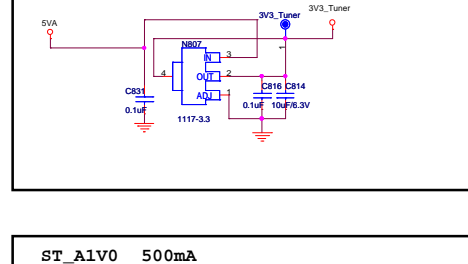
LV\_1V5 (RT2861) 200mA



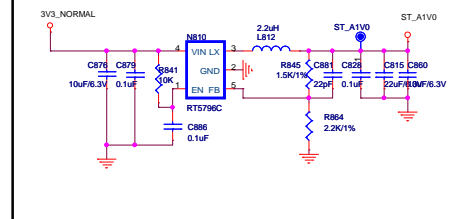
EMMC (D1V8)&EFUSE 300mA

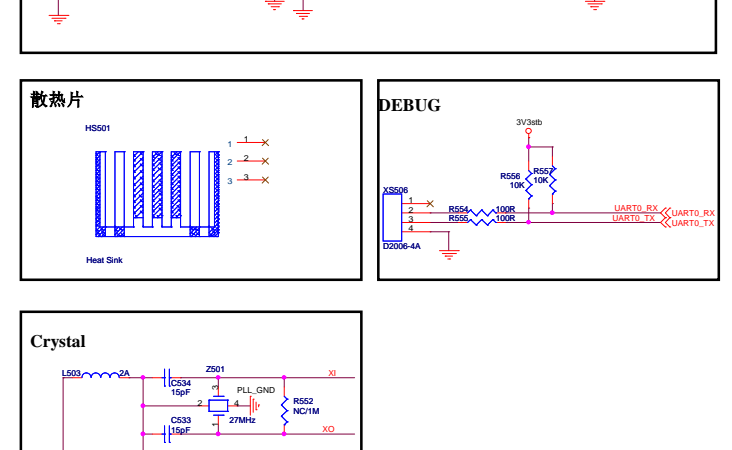
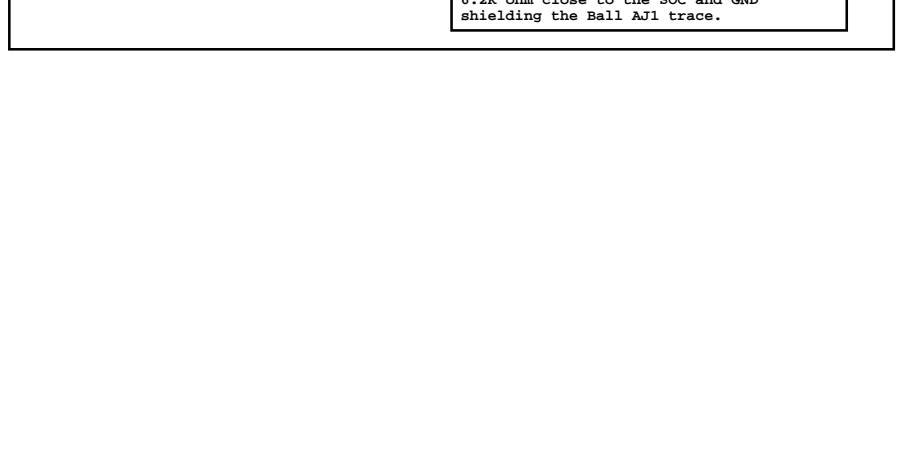
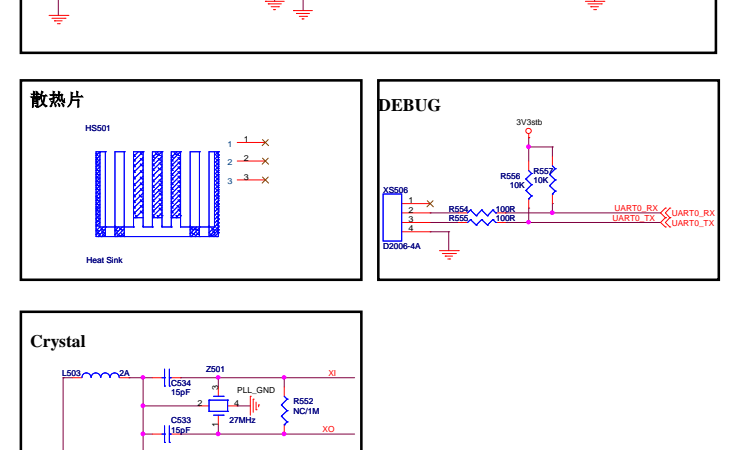
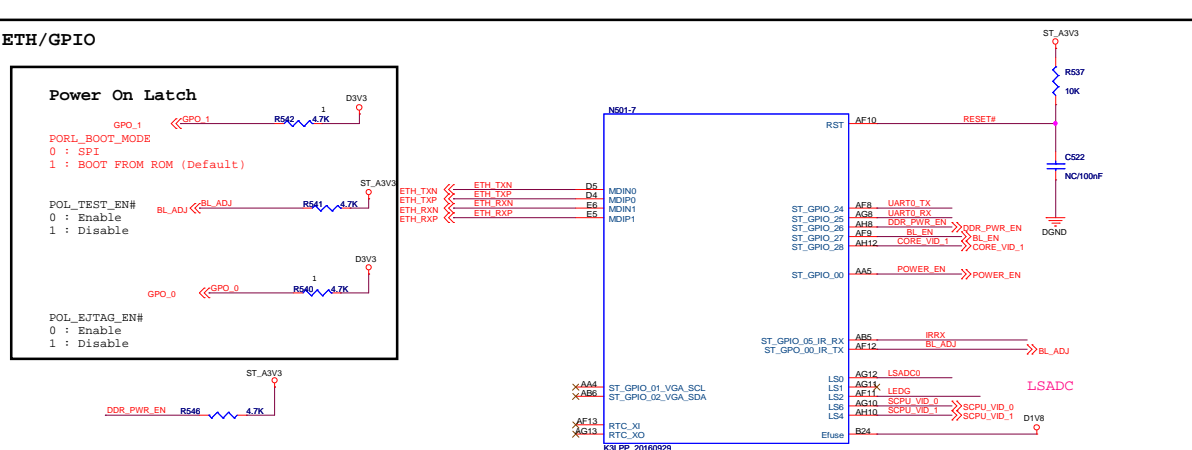
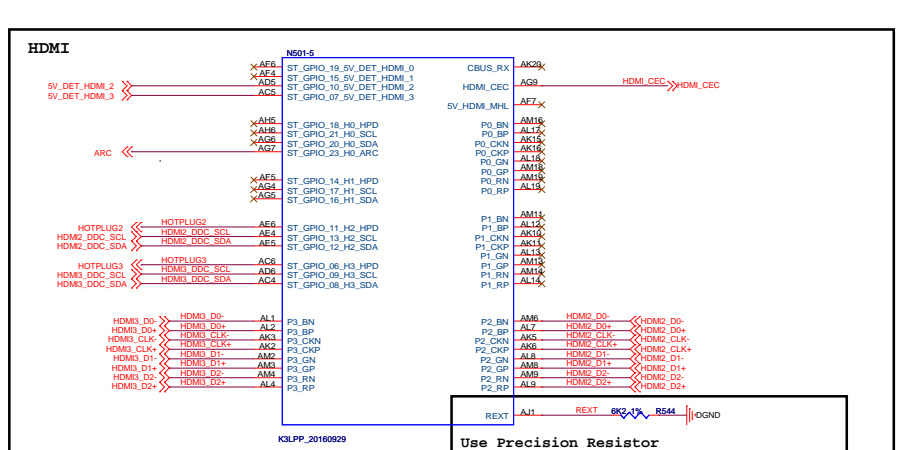
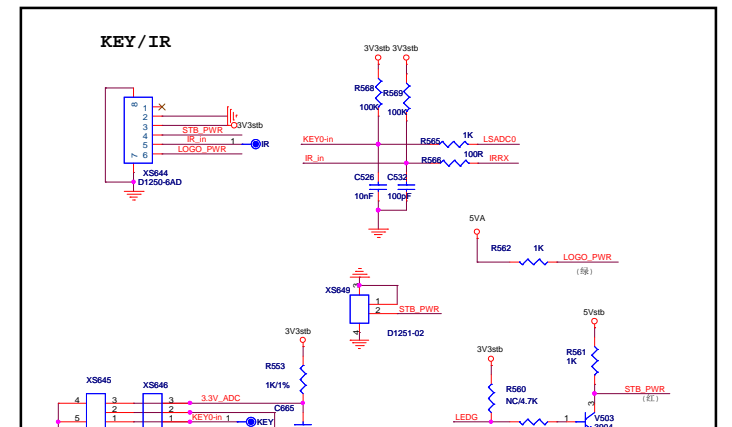
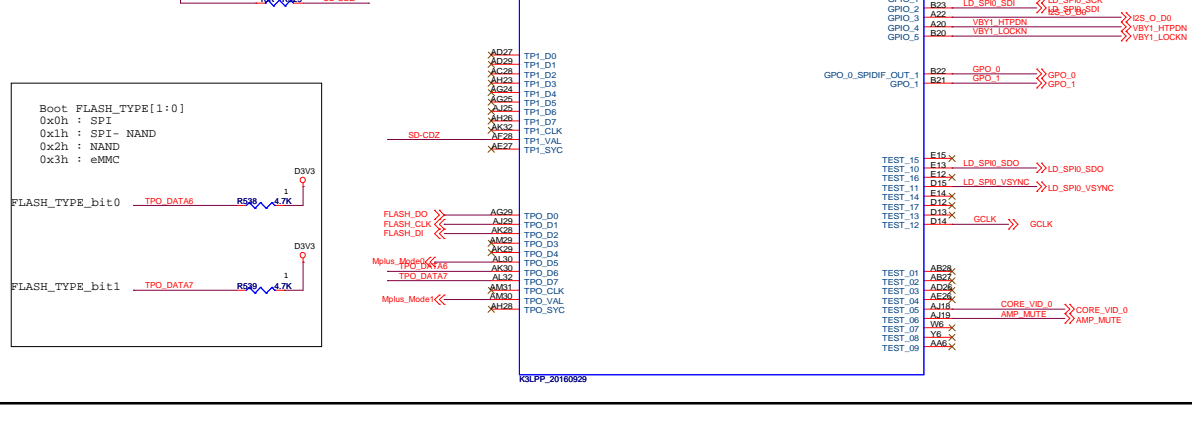
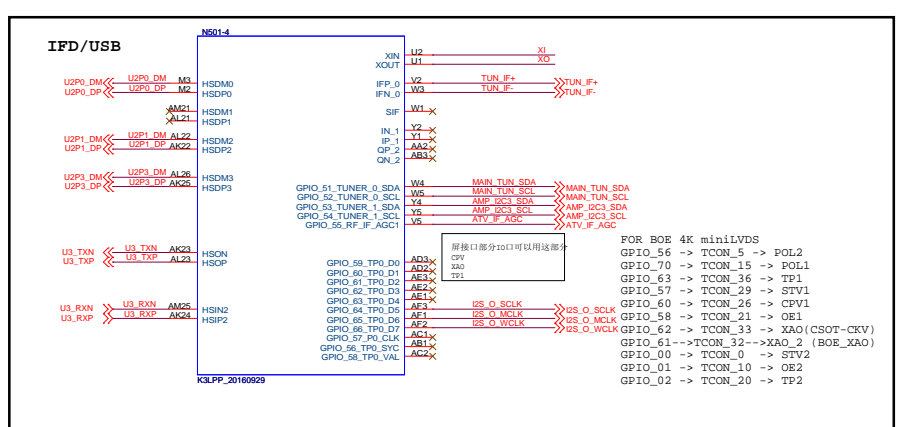
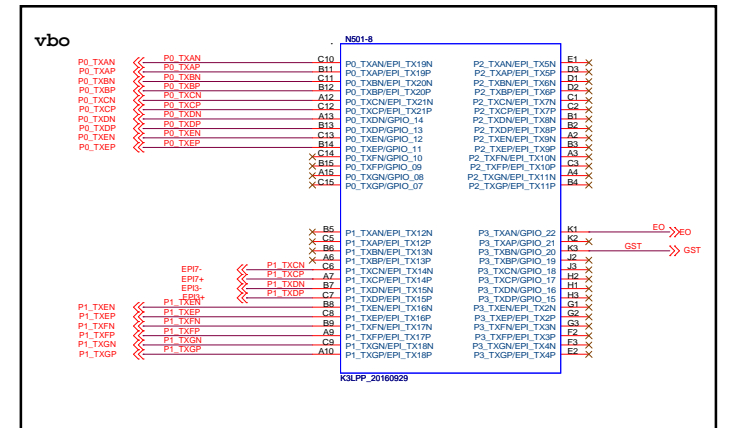
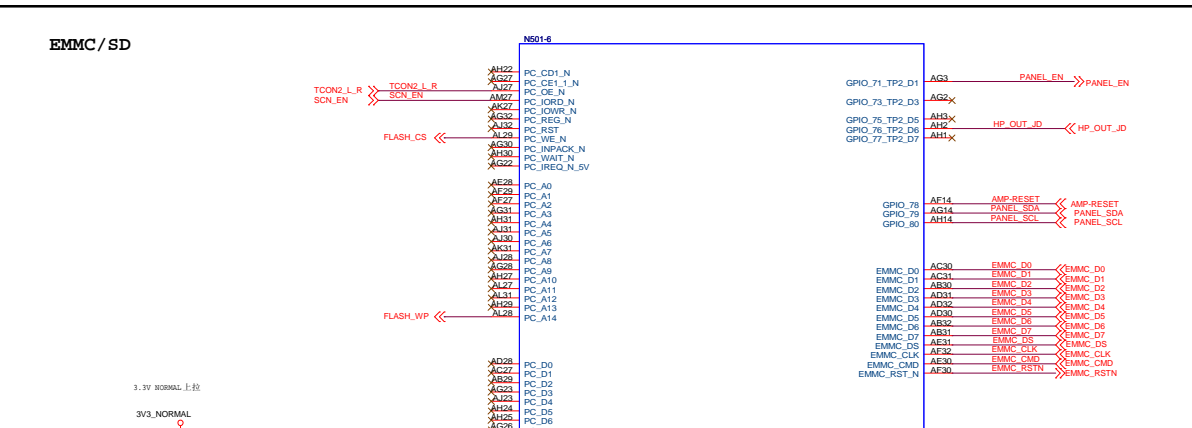
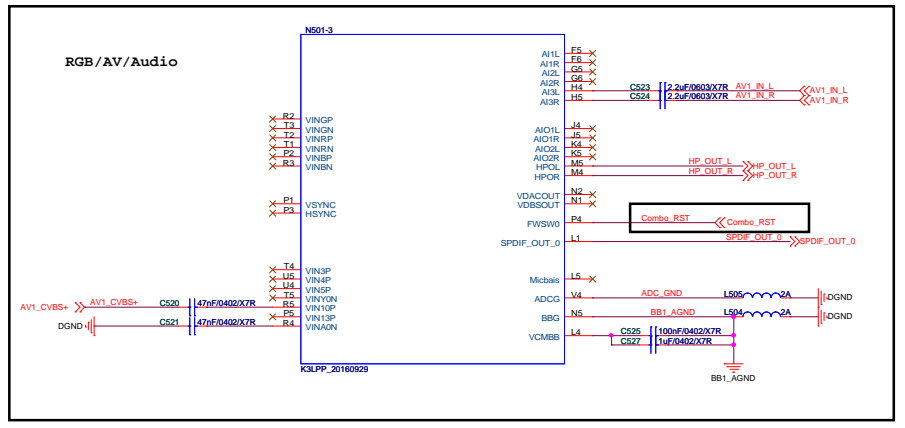


3V3\_TUNER 200mA



ST\_A1V0 500mA

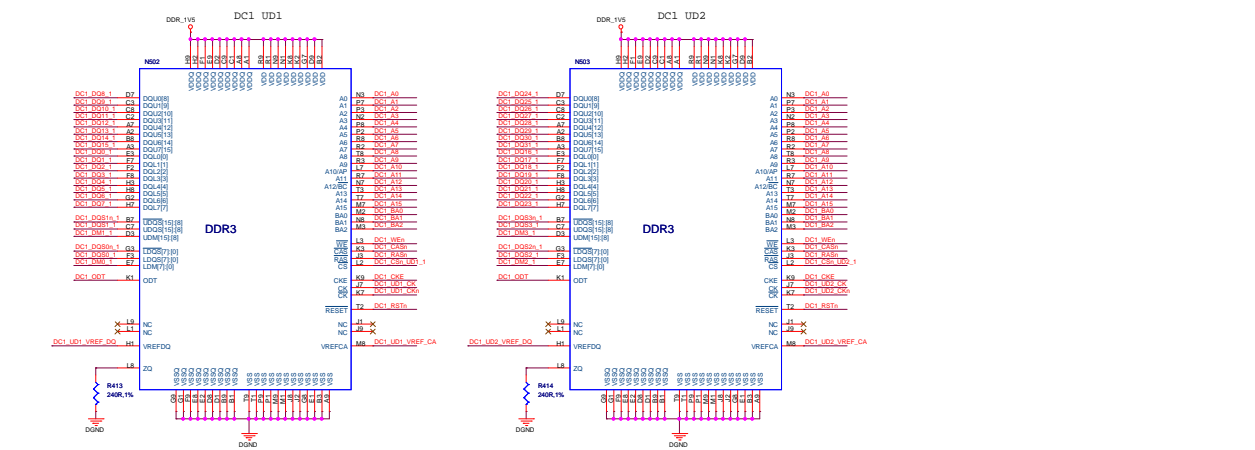
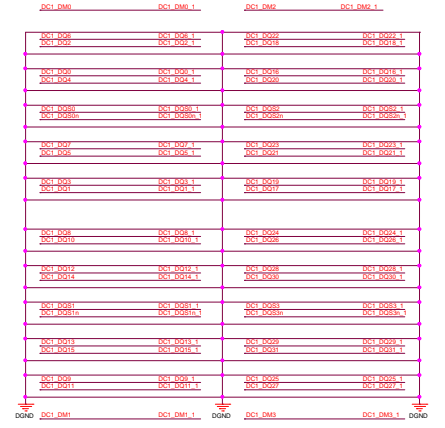
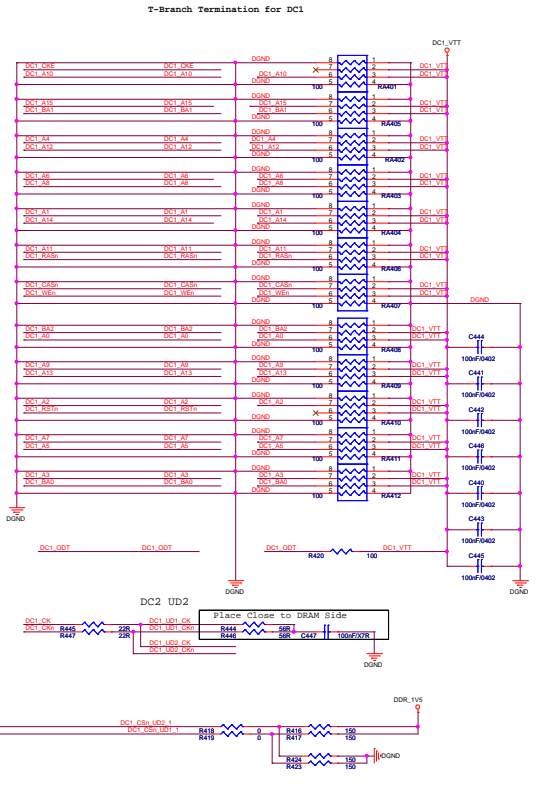
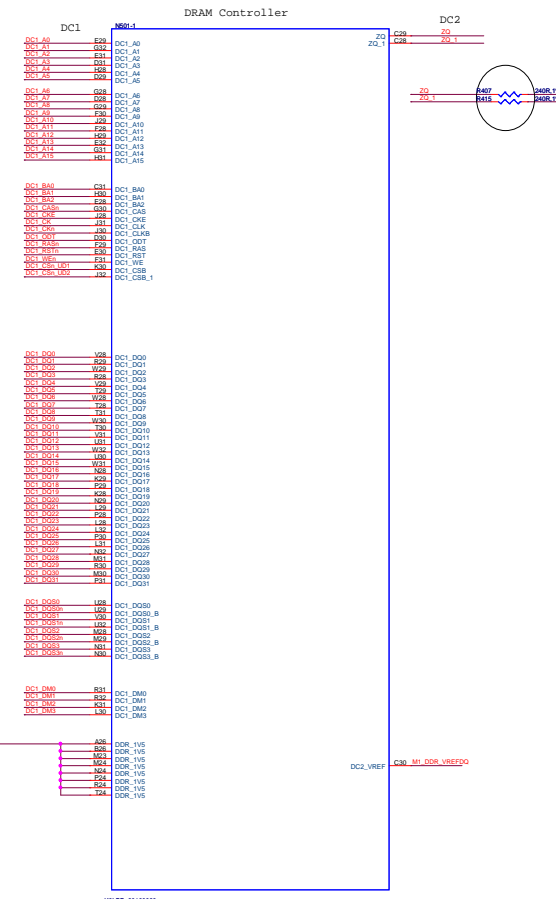
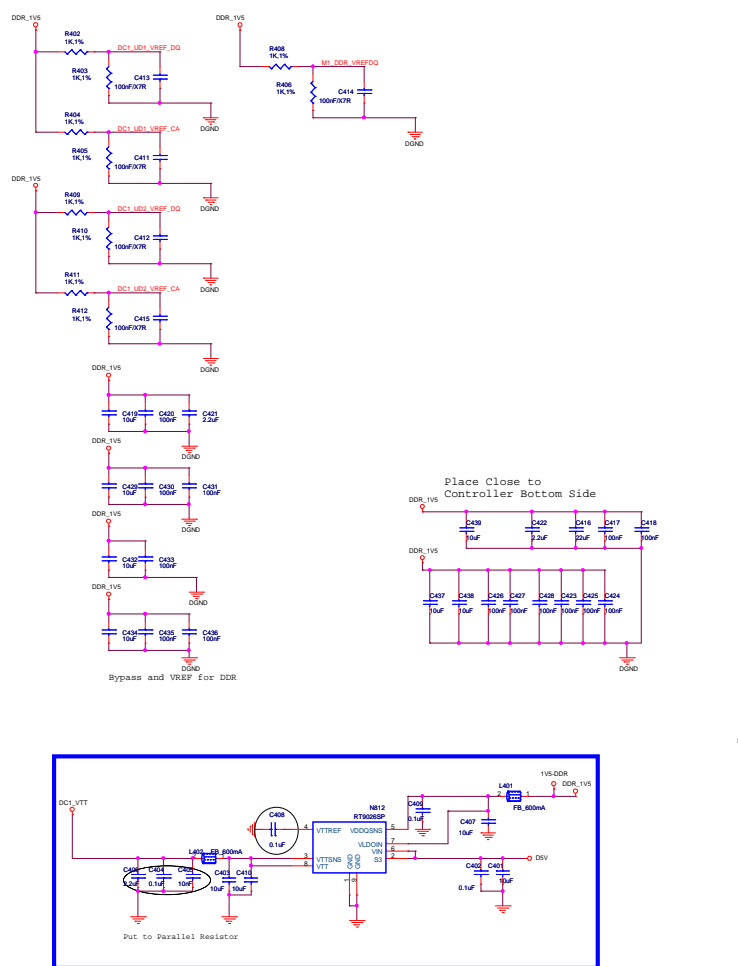


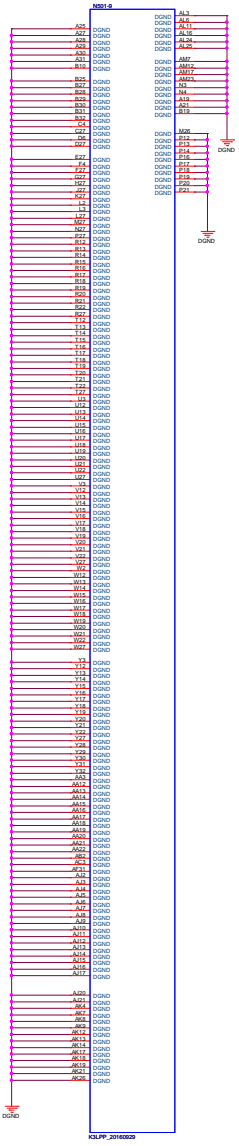
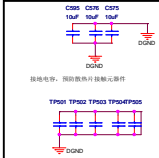
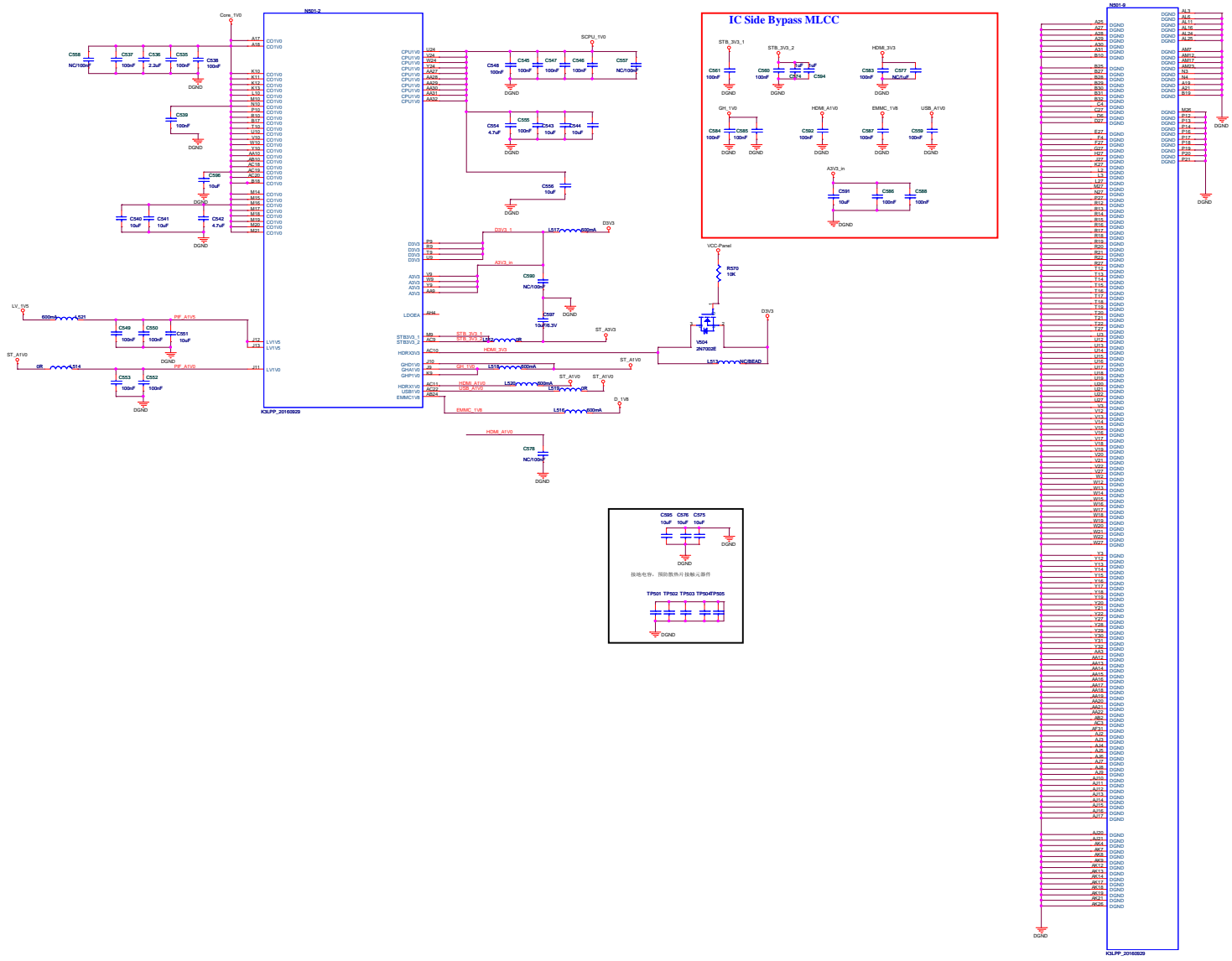


编制	
审核	
日期	

02.RTK2861

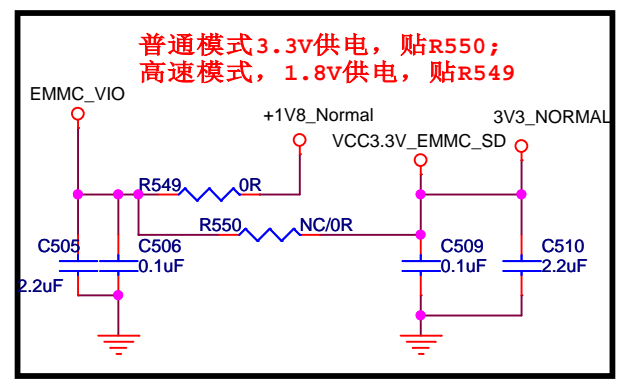
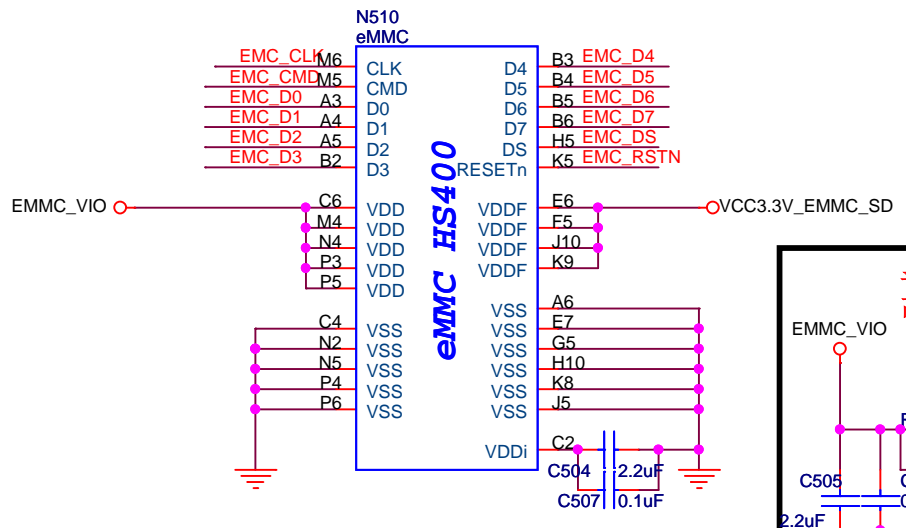
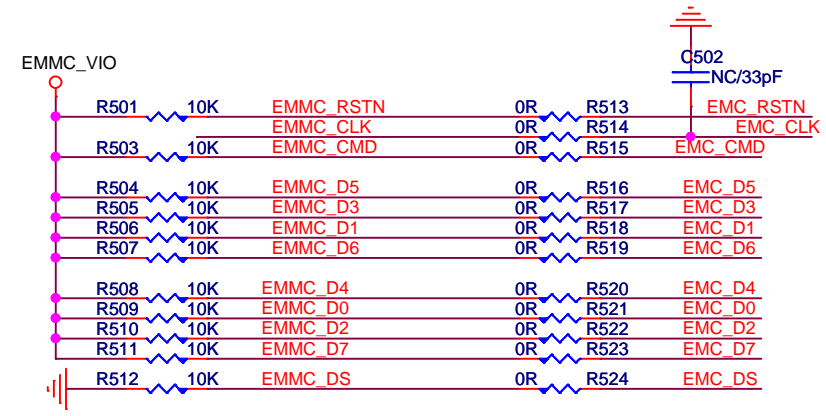
第 2 张





# EMMC

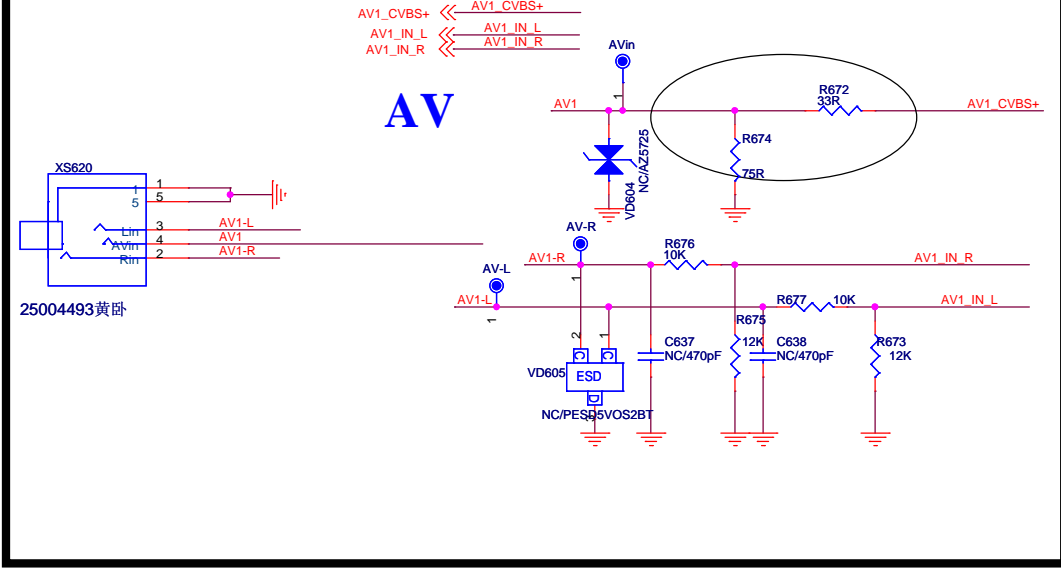
EMMC\_D0 >> EMMC D0  
 EMMC\_D1 >> EMMC D1  
 EMMC\_D2 >> EMMC D2  
 EMMC\_D3 >> EMMC D3  
 EMMC\_D4 >> EMMC D4  
 EMMC\_D5 >> EMMC D5  
 EMMC\_D6 >> EMMC D6  
 EMMC\_D7 >> EMMC D7  
 EMMC\_CLK >> EMMC CLK  
 EMMC\_RSTN >> EMMC RSTN  
 EMMC\_CMD >> EMMC CMD  
 EMMC\_DS >> EMMC\_DS



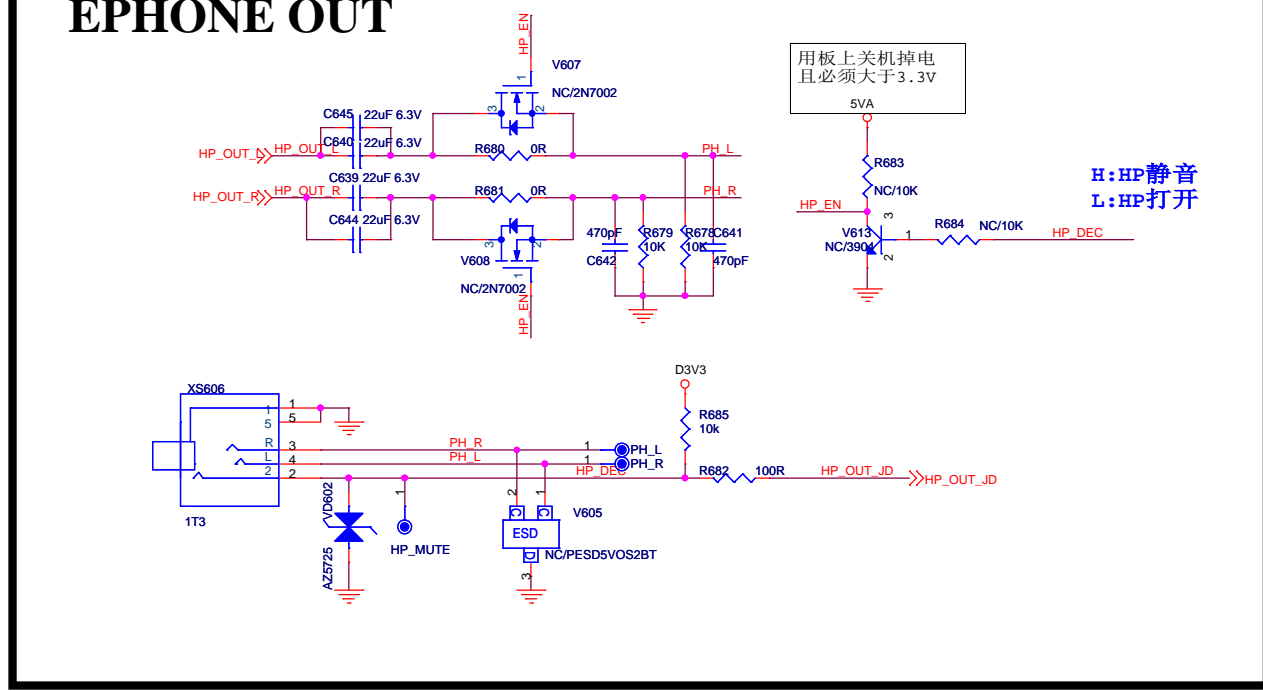
					拟制		05. EMMC&SD
					审核		
标记	数量	更改单号	签名	日期			



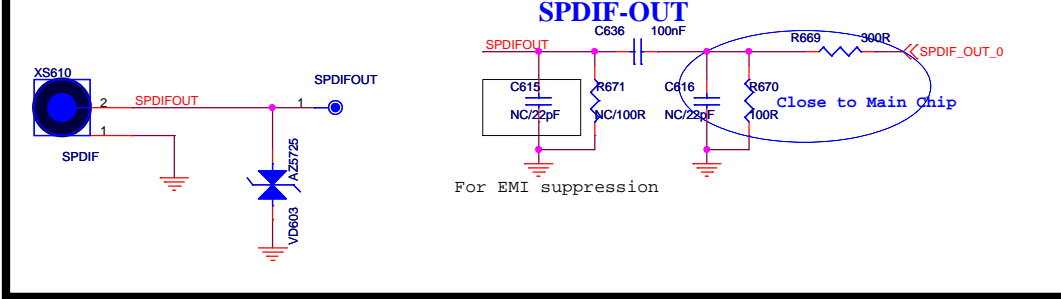
# AVin



# EPHONE OUT

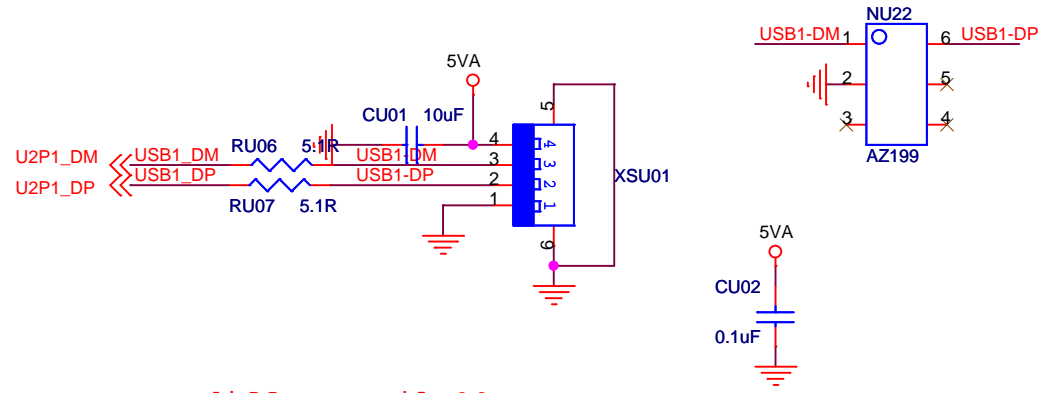


# SPDIF OUT



						拟制		07.AV/SPDIF
						审核		
标记	数量	更改单号	签名	日期				第 7 张

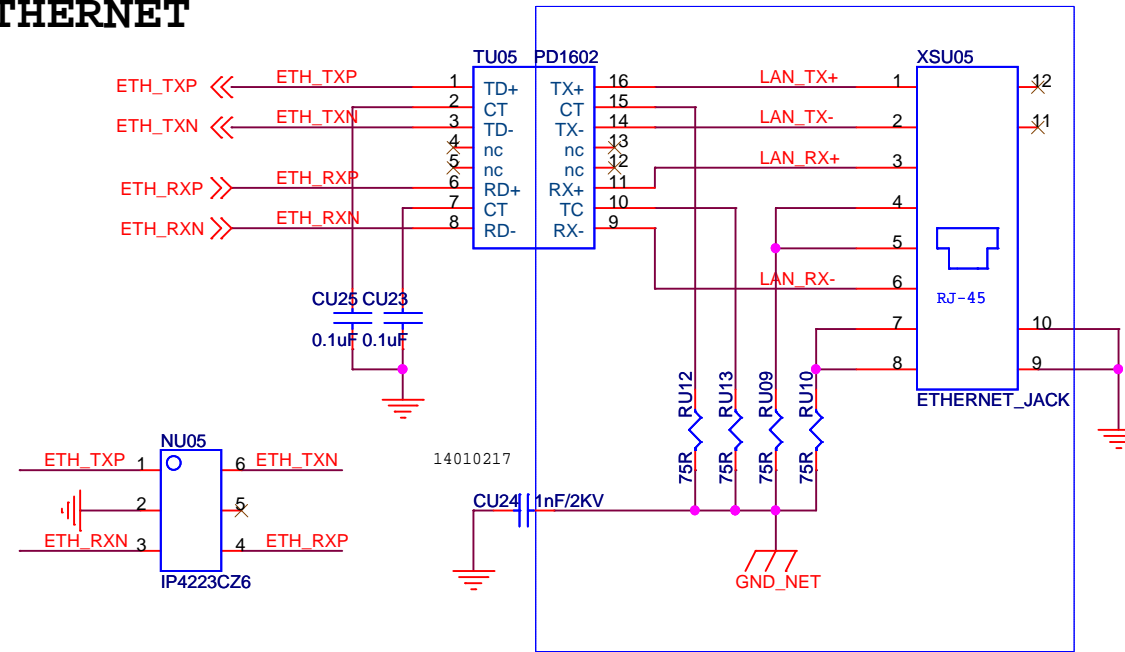
# USB2.0



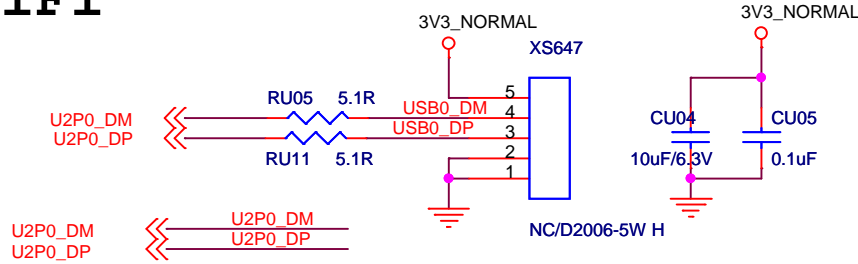
trace : diffentail 90 R



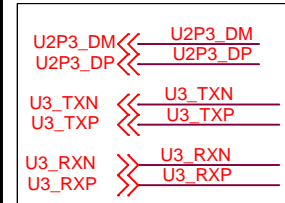
# ETHERNET



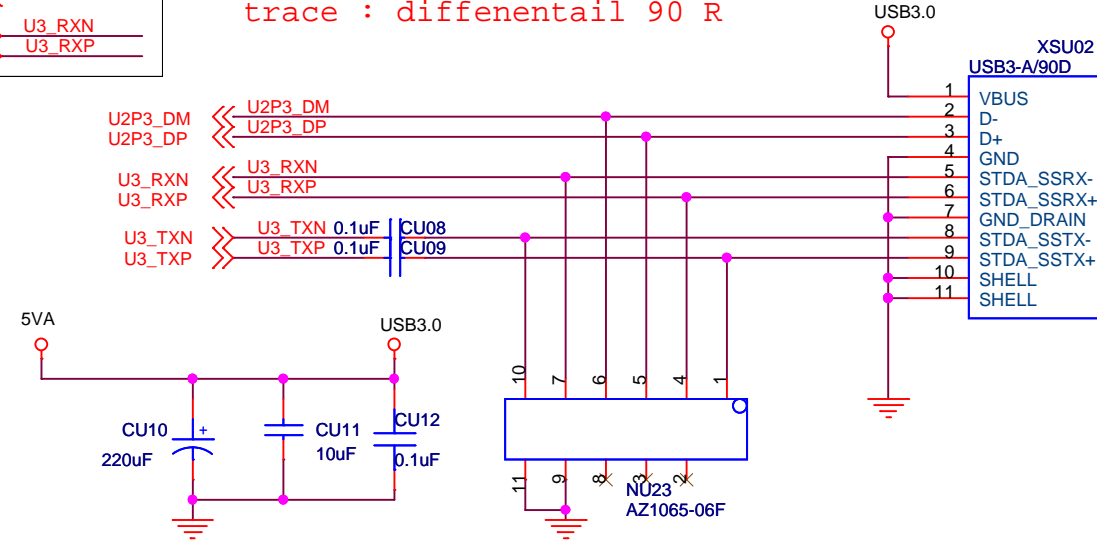
# WIFI



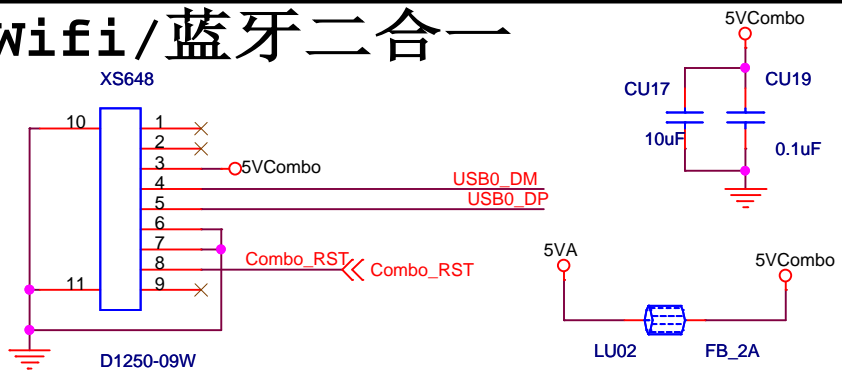
# USB3.0



trace : diffentail 90 R



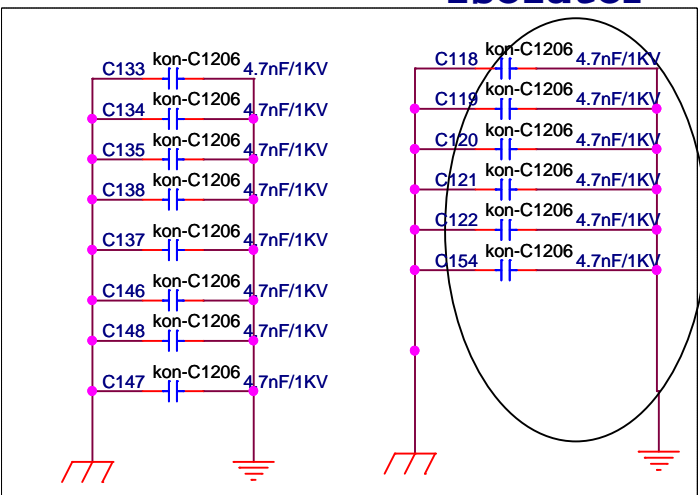
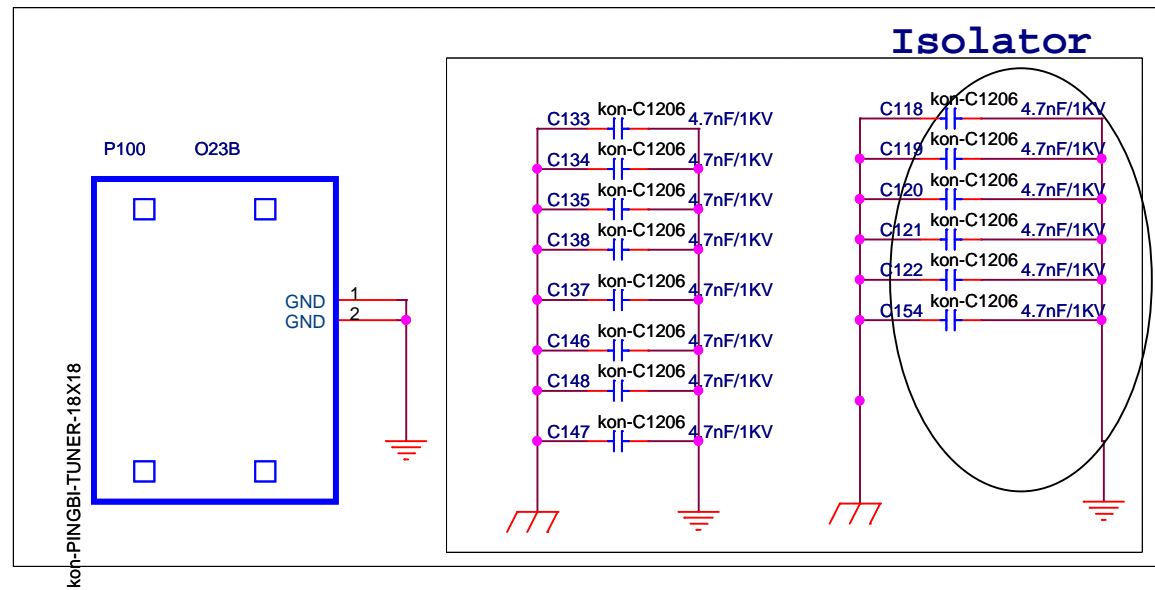
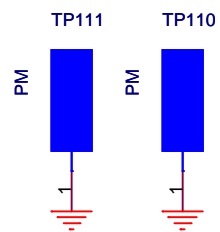
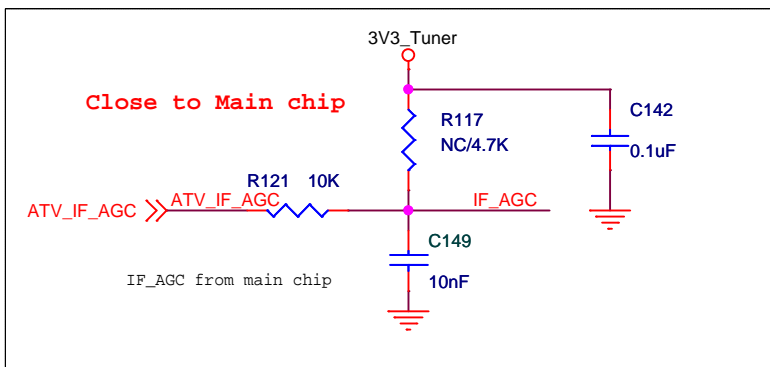
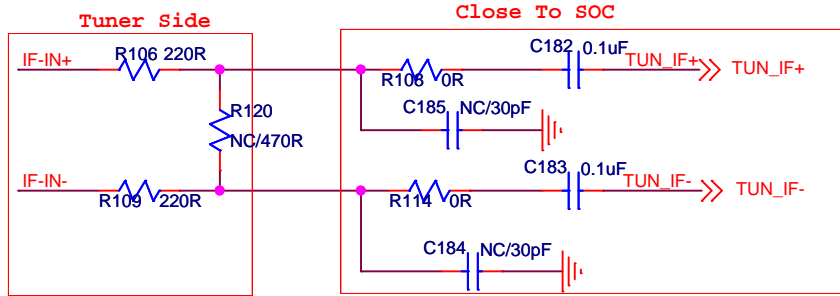
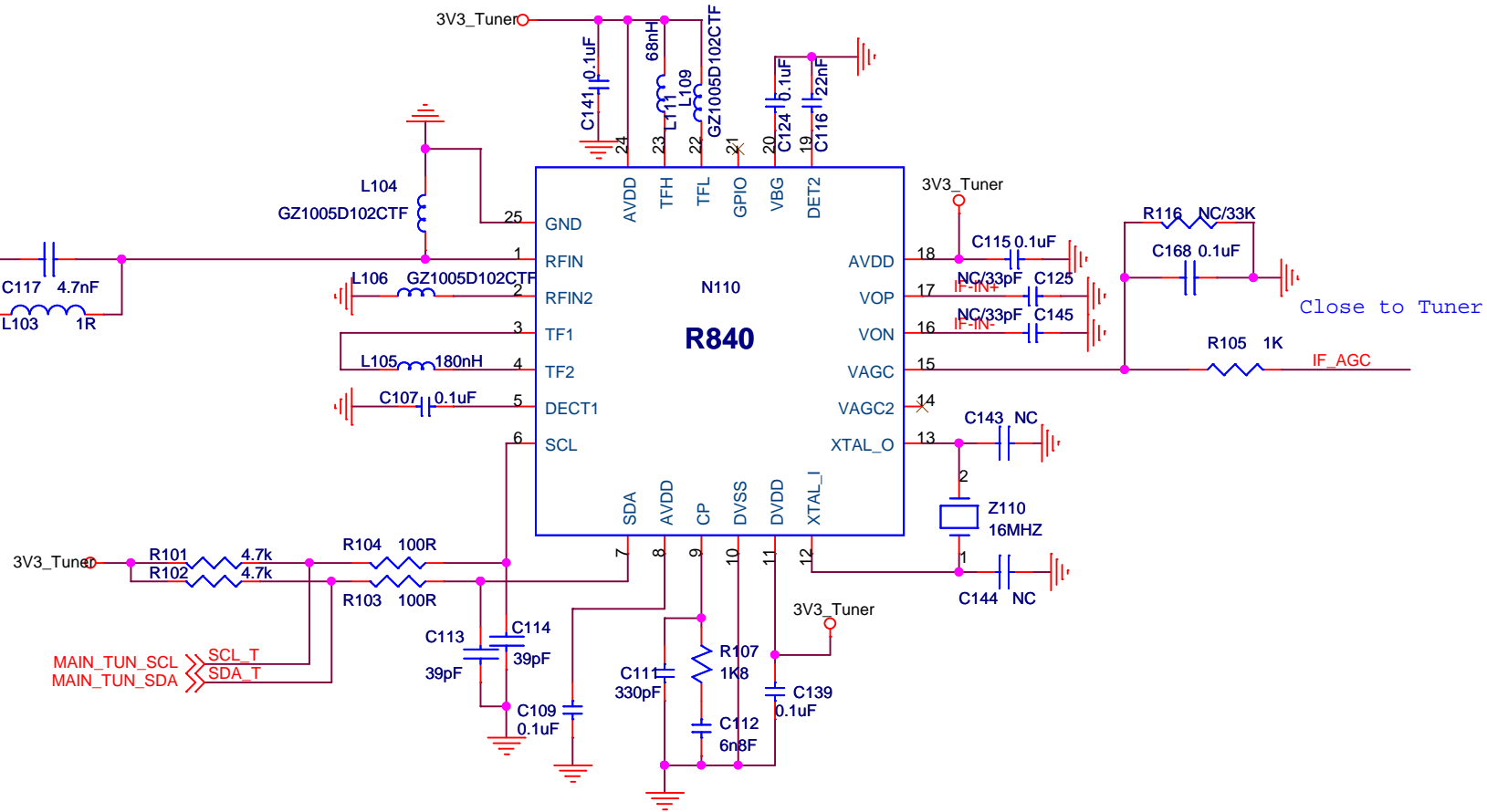
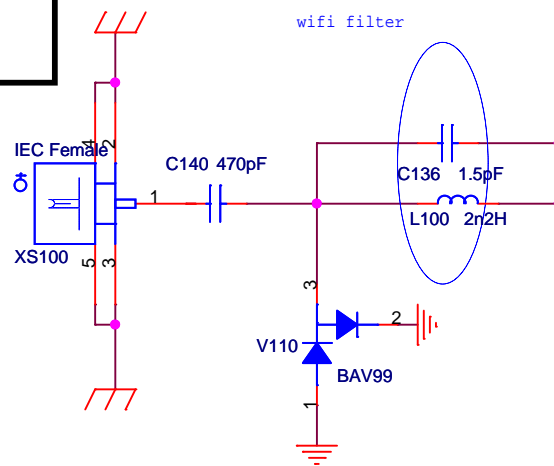
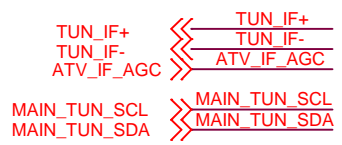
# Wifi/蓝牙二合一



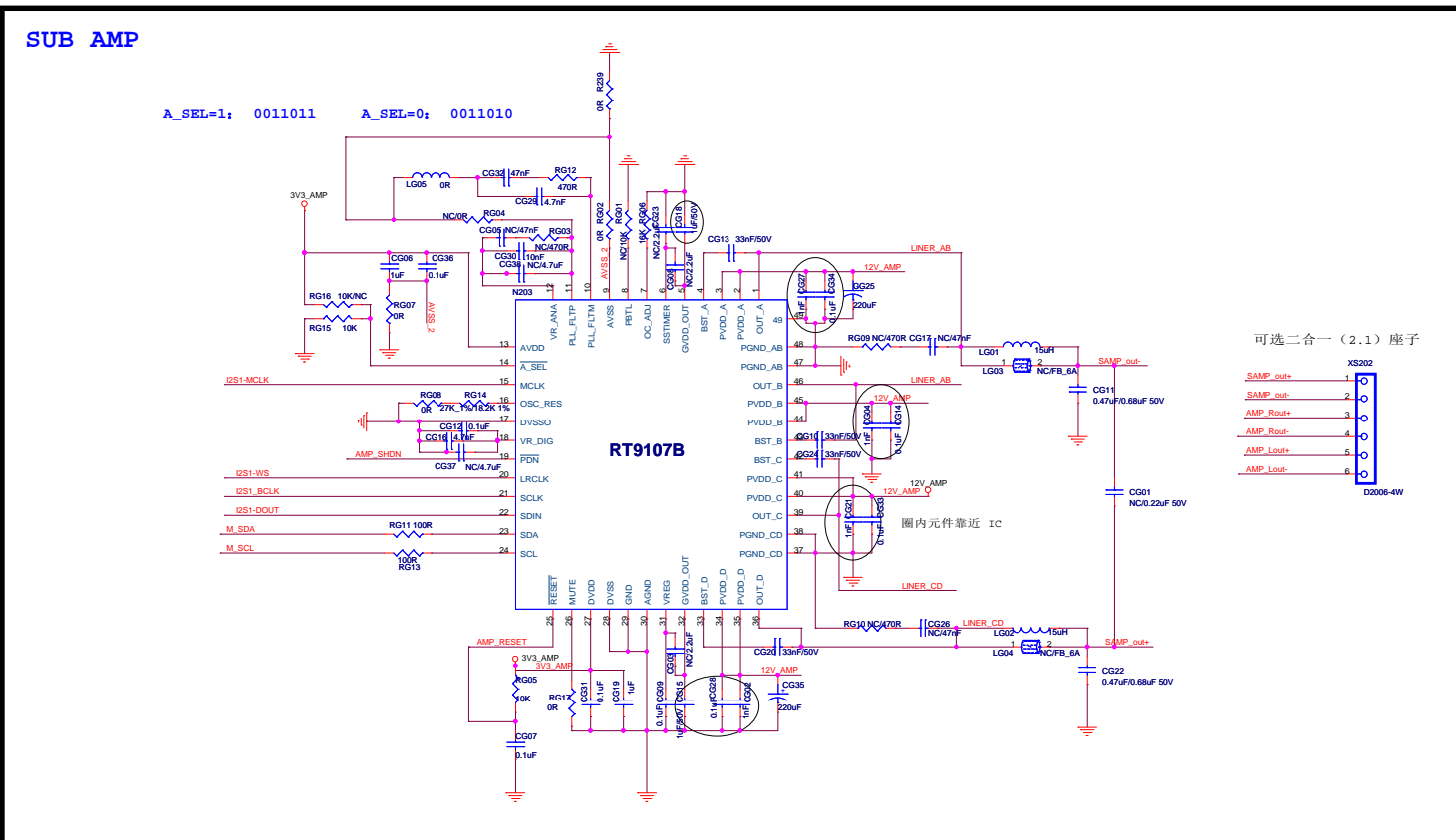
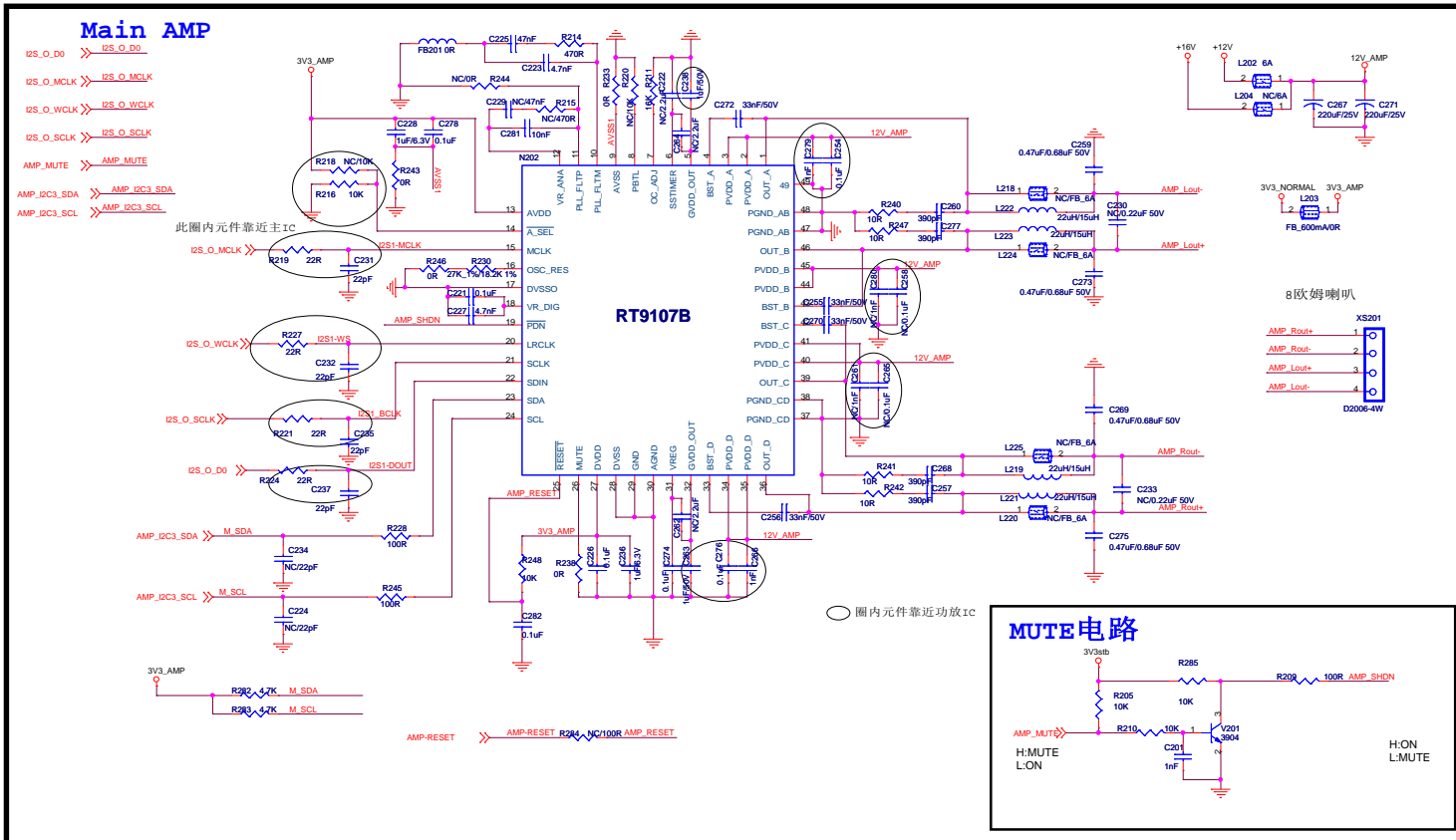
					拟制	
					审核	
标记数量	更改单号	签名	日期			
						08.USB&Ethernet
						第 8 张



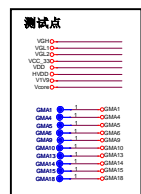
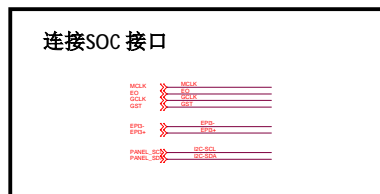
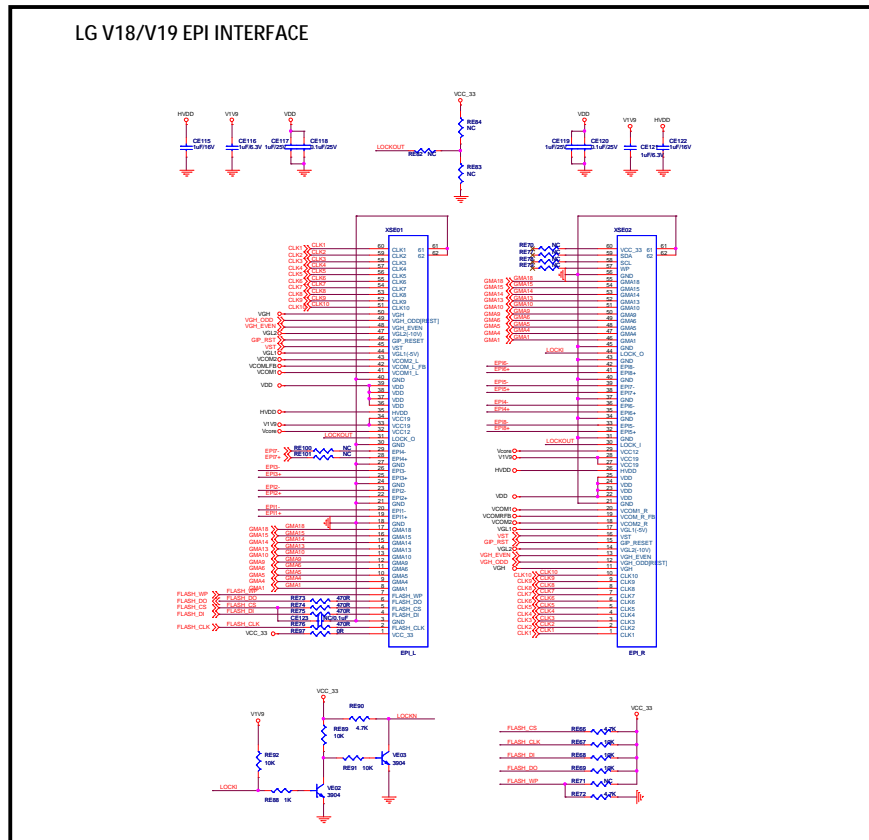
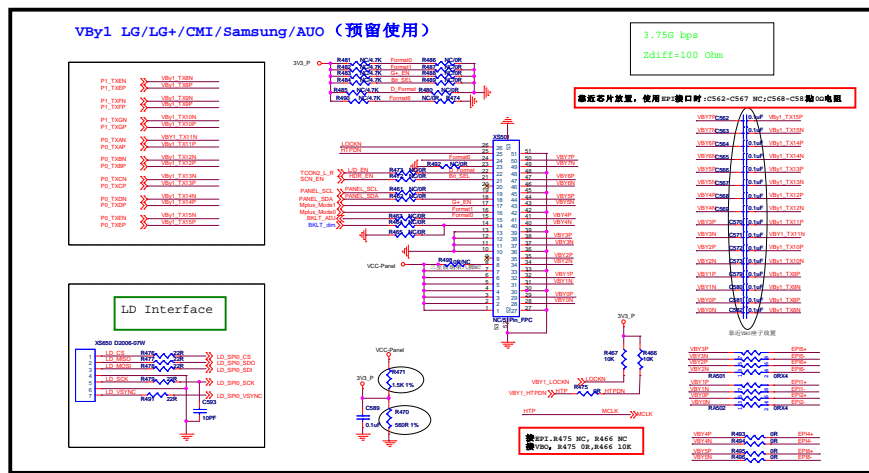
**Main Chip <--**



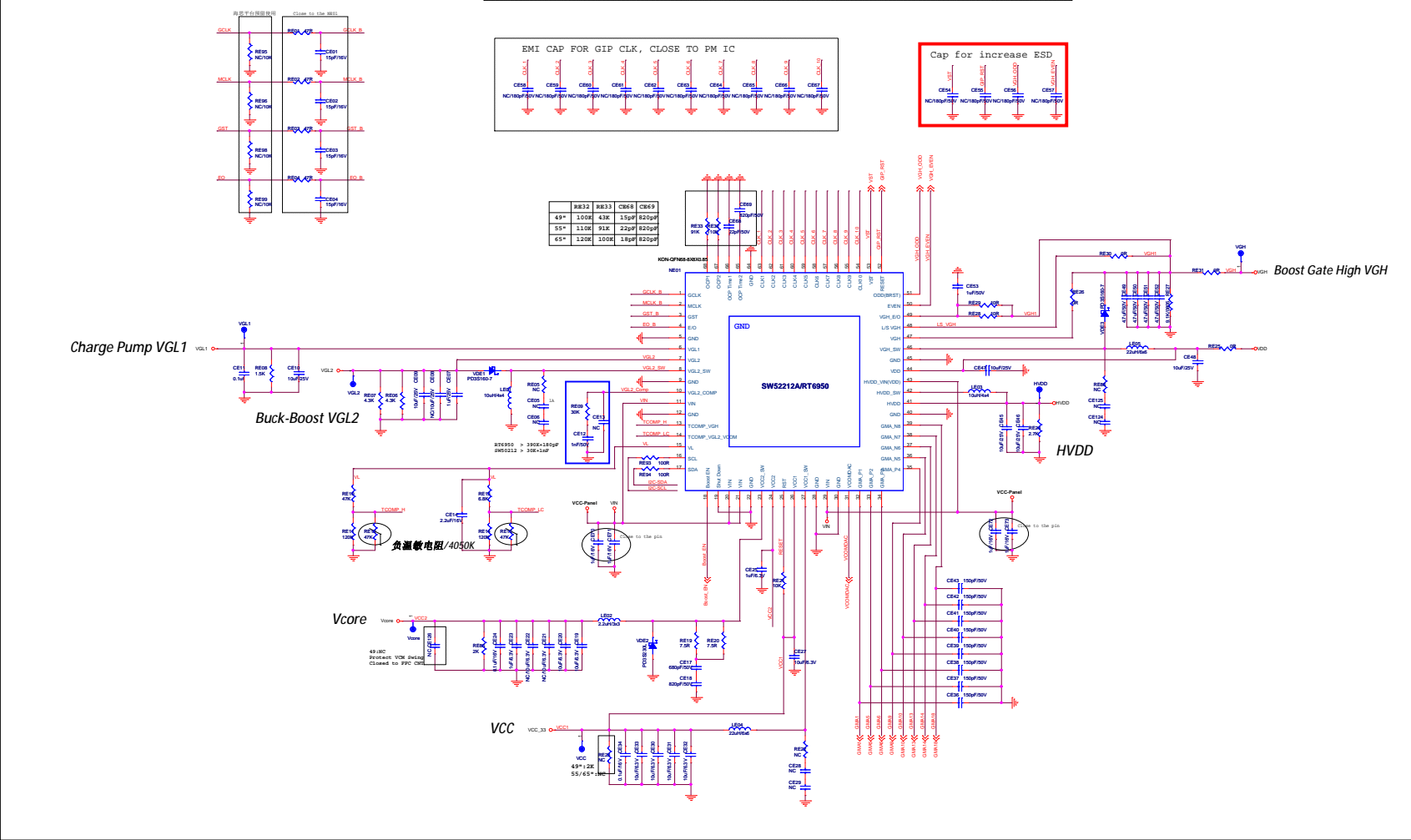
					拟制
					审核
标记数量	更改单号	签名	日期		



			抵制	
			审核	
标记数量	更改单号	签名	日期	



适用于LG V19 /49"/55"玻璃EPI  
SW5212+SY7623或RT6950+RT5093方案  
PM/GMA/LEVEL SHIFT三合一芯片



55" APN:		49" APN:	
VCC:3.3V	GMA1:15.06V	VCC:3.3V	GMA1:14.49V
Vcore:1.2V	GMA5:11.91V	Vcore:1.2V	GMA5:11.34V
VDD:16.53V	GMA6:10.93V	VDD:15.00V	GMA6:10.30V
HVDD:7.86V	GMA9:8.19V	HVDD:7.30V	GMA9:7.51V
V1V9:1.827V	GMA10:7.55V	V1V9:1.88V	GMA10:7.06V
VGH:27.9V	GMA13:5.60V	VGH:28.0V	GMA13:4.68V
VGL1:-5.0V	GMA14:4.60V	VGL1:-7.0V	GMA14:3.71V
VGL2:-15V	GMA18:1.47V	VGL2:-15V	GMA18:0.70V
VCOM:5.38V		VCOM:4.381V	

