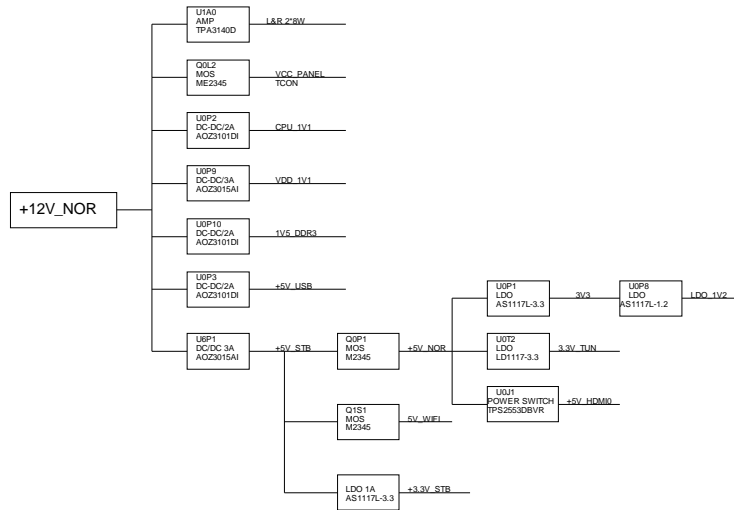
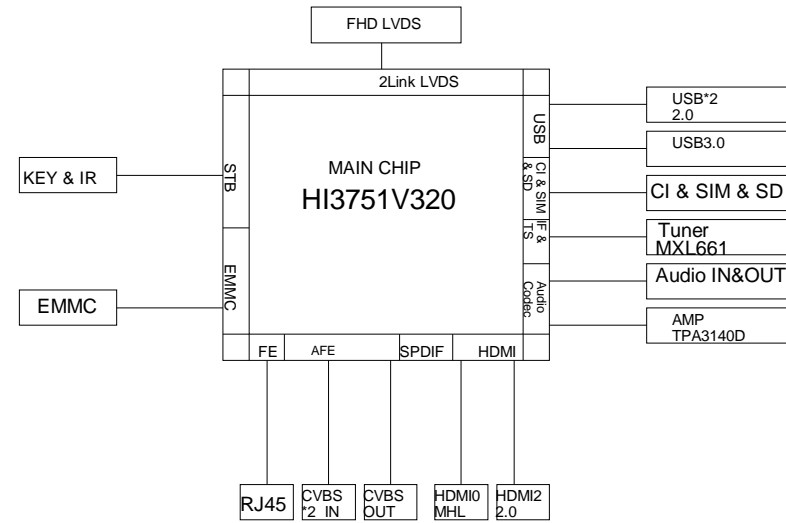


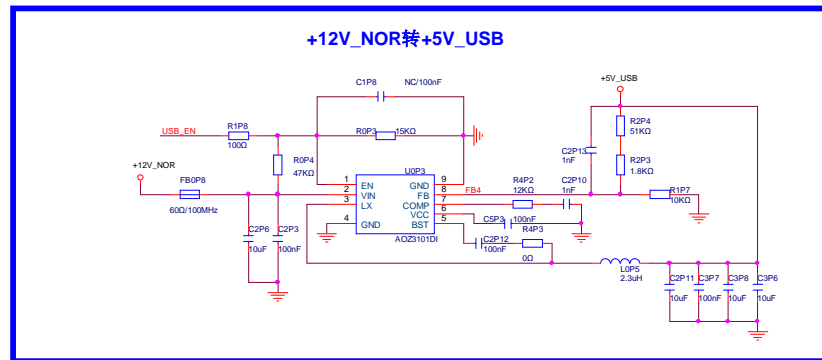
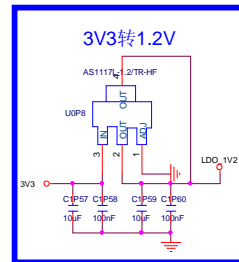
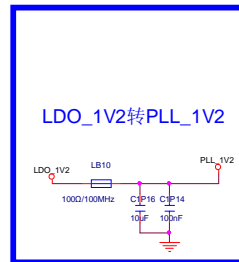
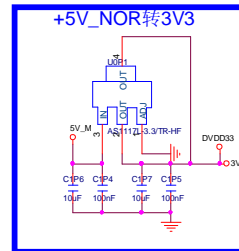
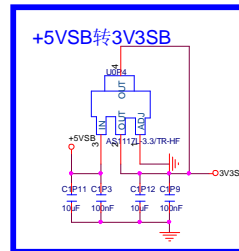
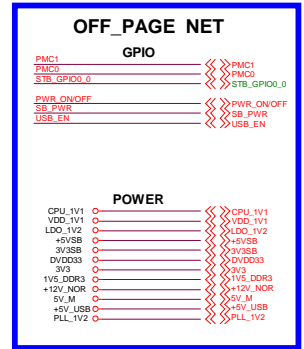
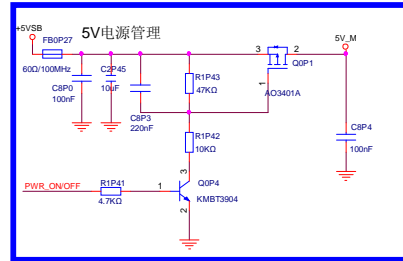
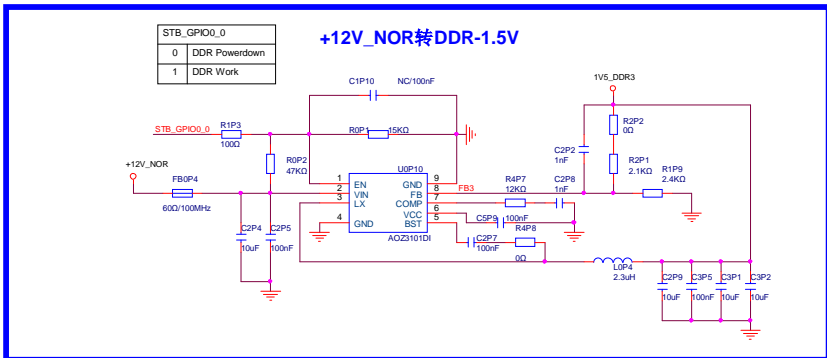
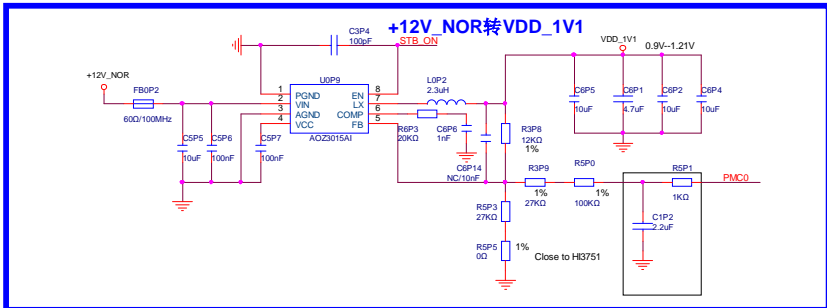
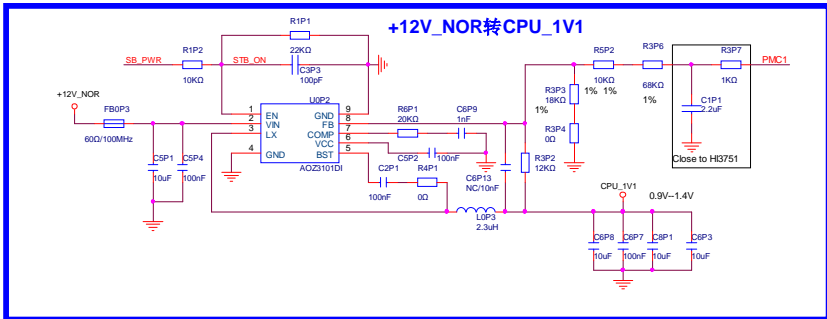
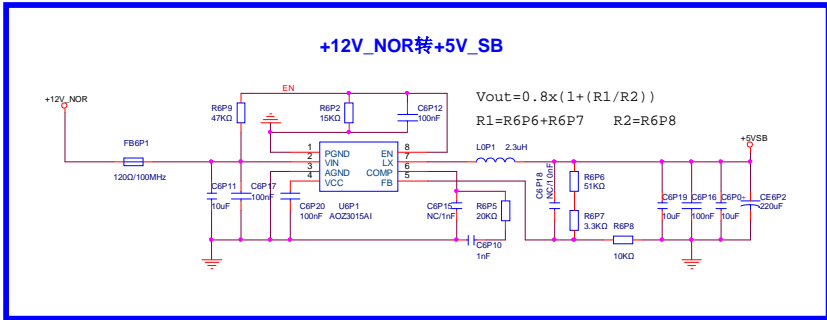
Power tree & Boot strap

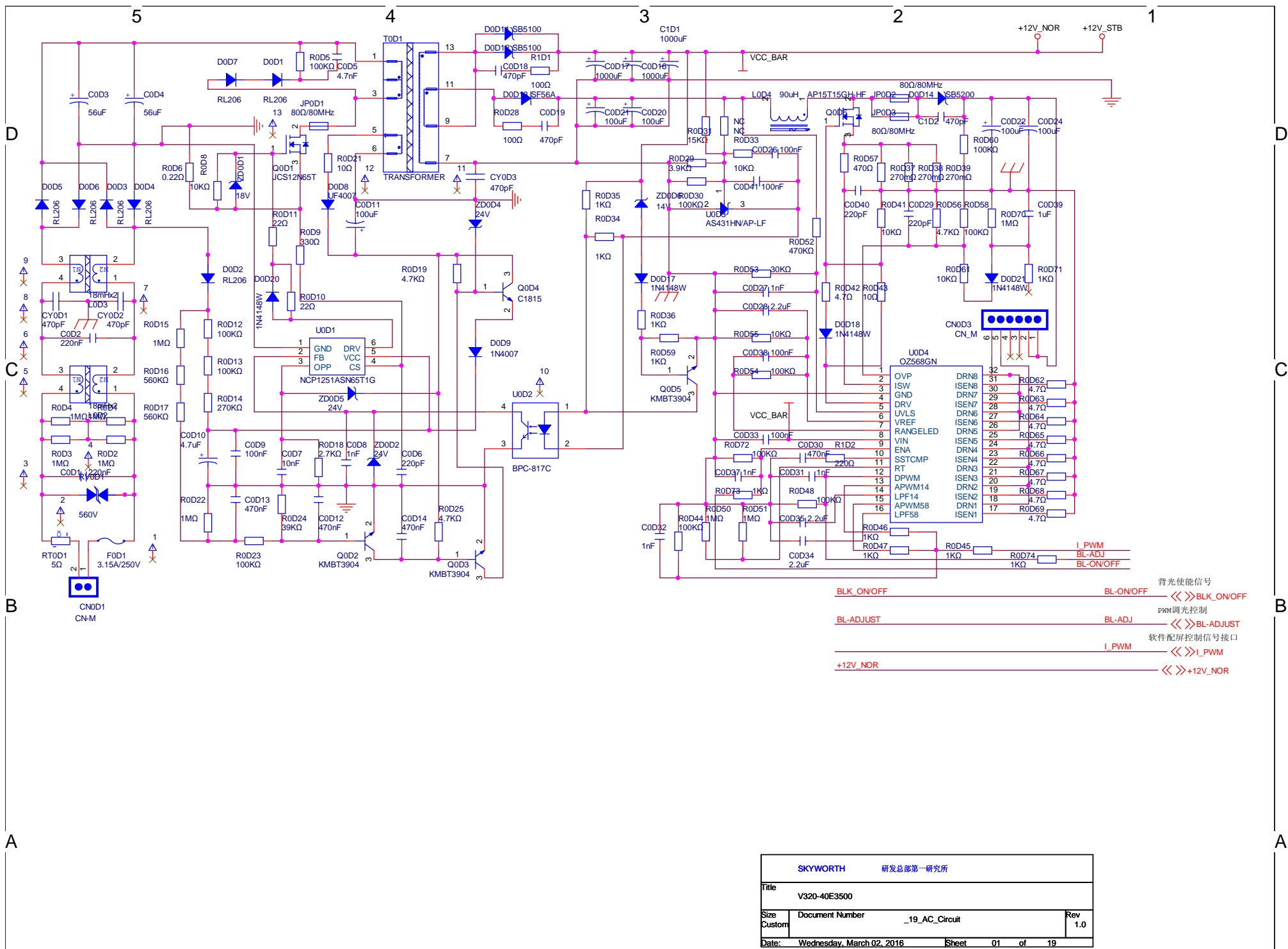


BLOCK DIAGRAM



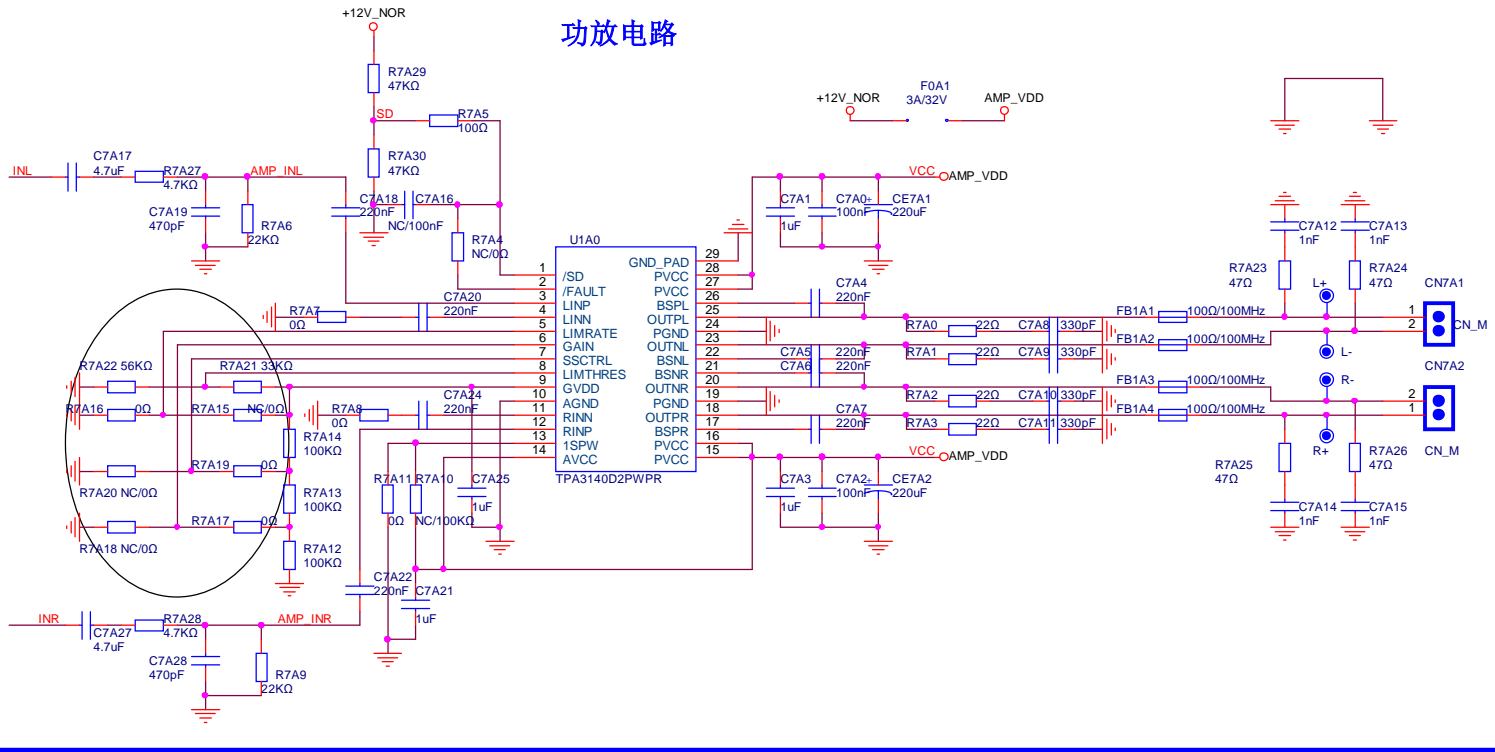
SKYWORTH 智慧生活 领先一步	
Title	V320-40E3500
Size	Document Number 00_A_Check_List
Rev	1.0
Date	Wednesday, March 02, 2016 Sheet 00_A of 10





SKYWORTH 研发总部第一研究所	
Title V320-40E3500	
Size Custom	Document Number _19_AC_Circuit
Date: Wednesday, March 02, 2016	Sheet 01 of 19
	Rev 1.0

功放电路



OFF-PAGE NET

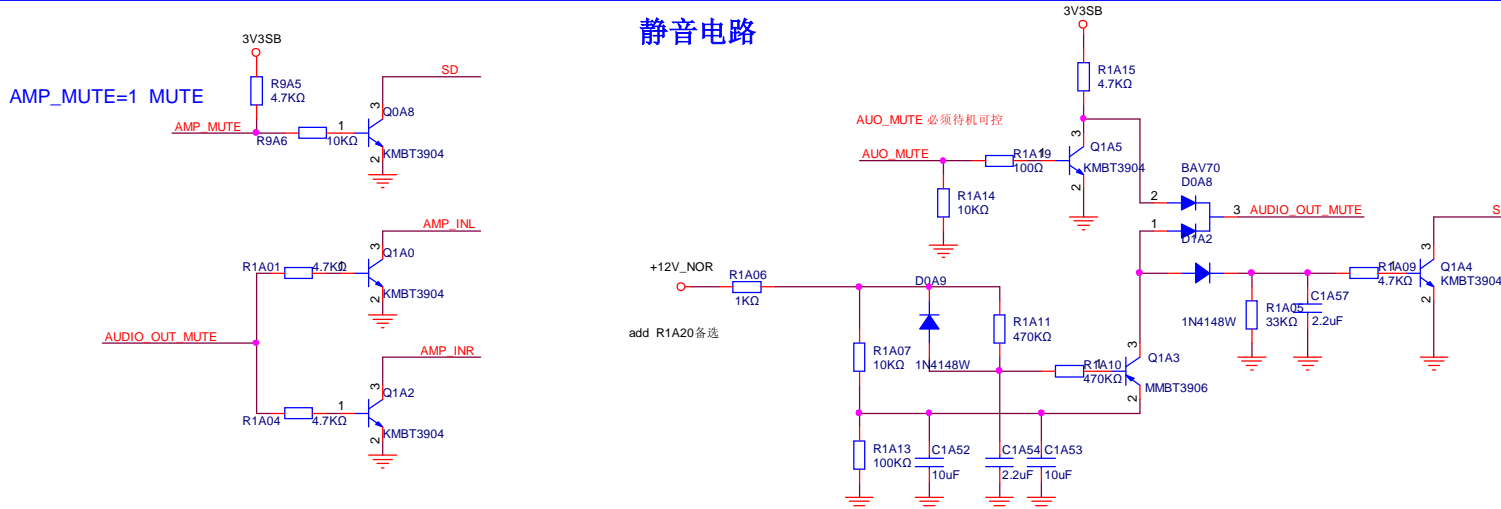
GPIO



POWER

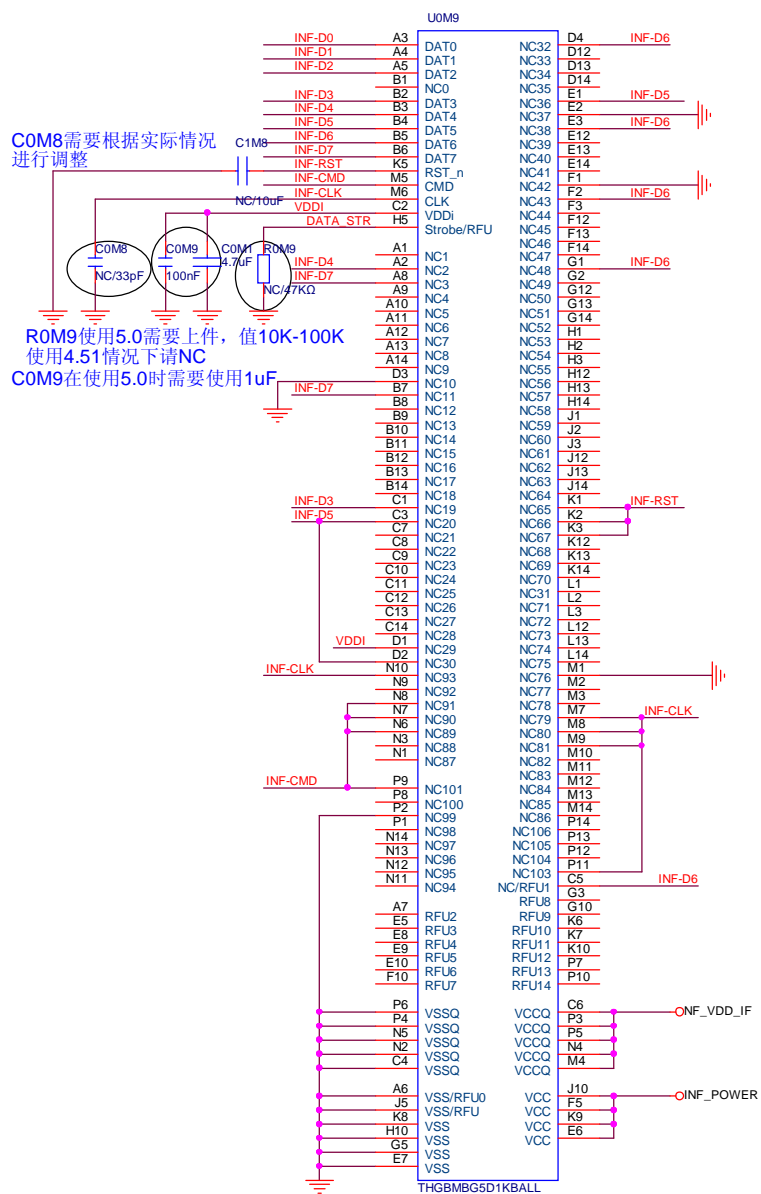


静音电路



SKYWORTH 研发总部第一研究所	
Title V320-40E3500	
Size B	Document Number 02_AMP_TPA3140 Rev 1.0
Date: Friday, March 04, 2016	Sheet 02 of 19

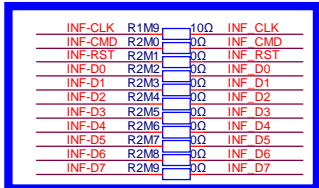
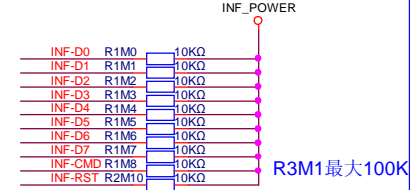
INAND FLASH



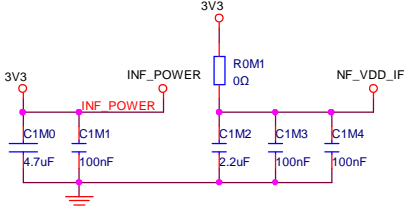
C0M8需要根据实际情况进行调整

R0M9使用5.0需要上件, 值10K-100K
使用4.51情况下请NC

C0M9在使用5.0时需要使用1uF



R1M8最大使用27Ω, 0Ω的电阻根据方案不同需要调整



H8400向下兼容H8200, 如果要用H8模式, NF_VDD_IF请使用1.8V供电, 不用H8模式, 两个电源都用3.3V即可

引脚号	定义	
	Ver4.51	Ver 5.0
A6	RFU	VSS
H5	RFU	Data strobe
J5	RFU	VSS
C5	RFU	NC

RFU: Reserved For future Use 悬空

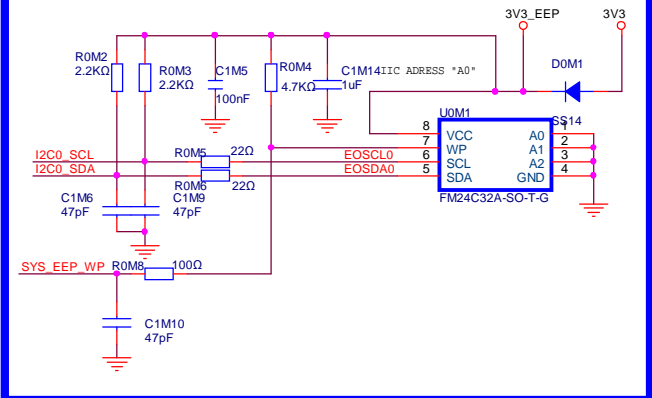
注意: 由于原理图符号做了4.51与5.0的兼容, 以上四个引脚的定义请参照表格设计

Vendor	Ver4.51	Ver 5.0
SUMSANG		
Toshiba	√	√
HYNIX	√	√

OFF_PAGE NET

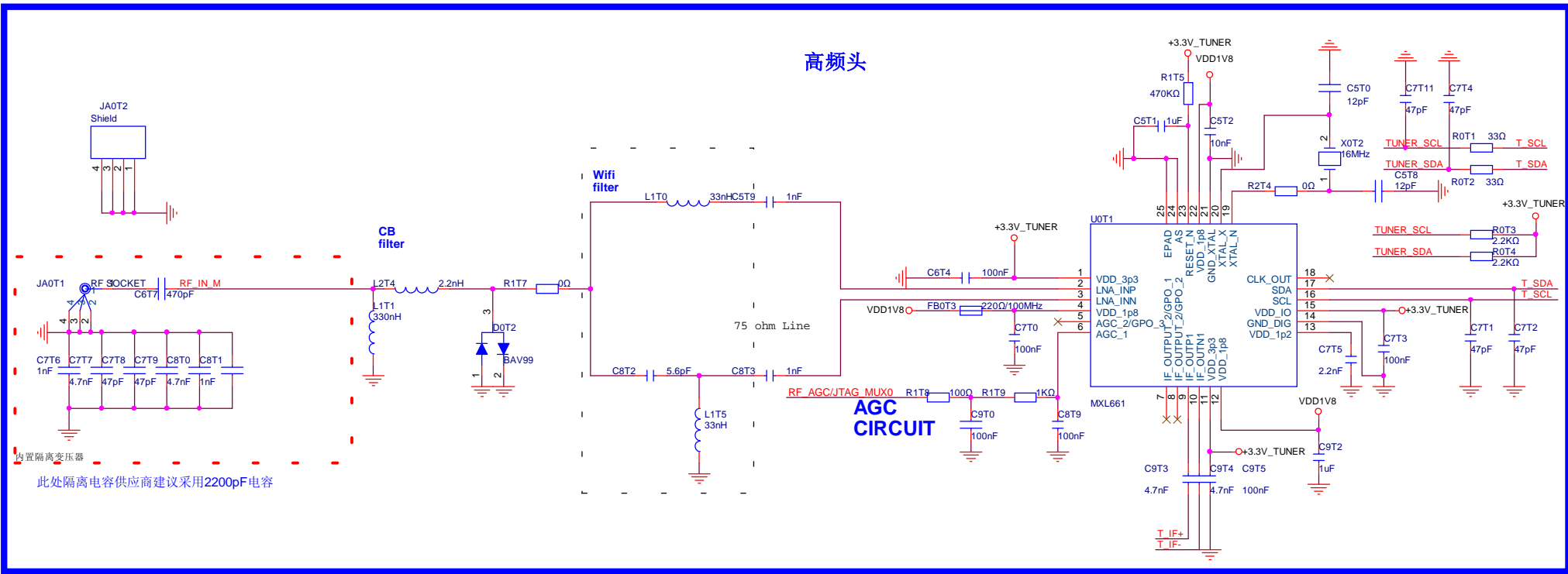


System E2PROM

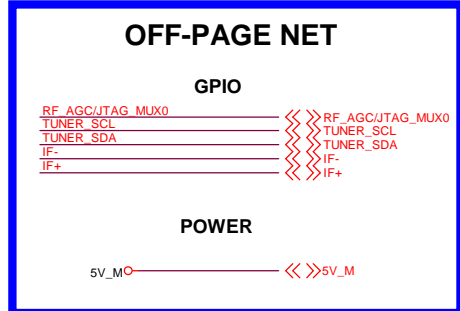
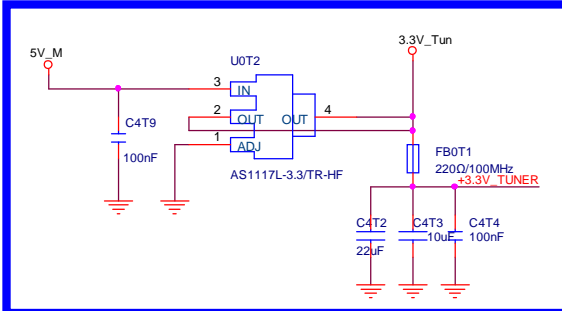
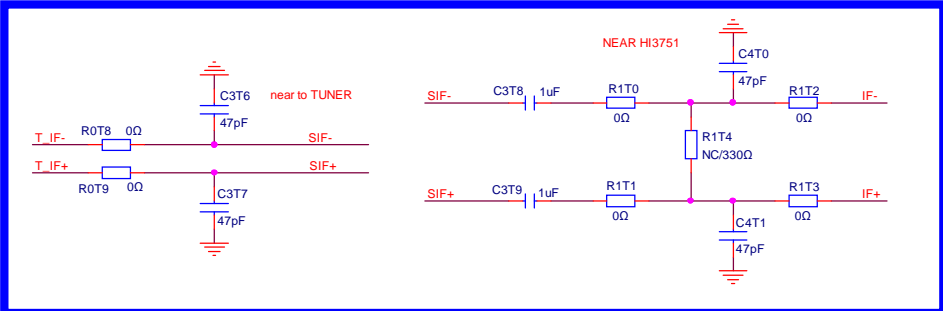


SKYWORTH 研发总部第一研究所	
Title	V320-40E3500
Size B	Document Number 03_MEMORY
Date: Wednesday, March 02, 2016	Sheet 03 of 19

高频头

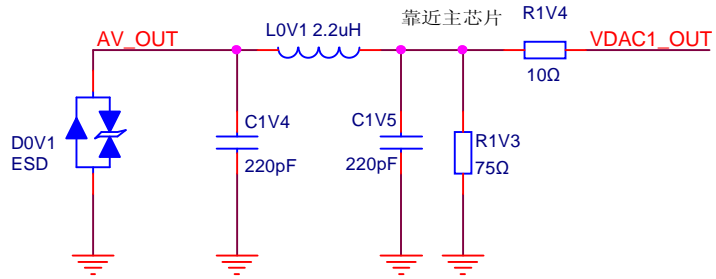


内置隔离变压器
此处隔离电容供应商建议采用2200pF电容



SKYWORTH 研发总部第一研究所	
Title: V320-40E3500	
Size B	Document Number: 08_TUNER
Date: Friday, March 04, 2016	Rev: 1.0
Sheet: 08	of 19

AV-OUT



OFF-PAGE NET

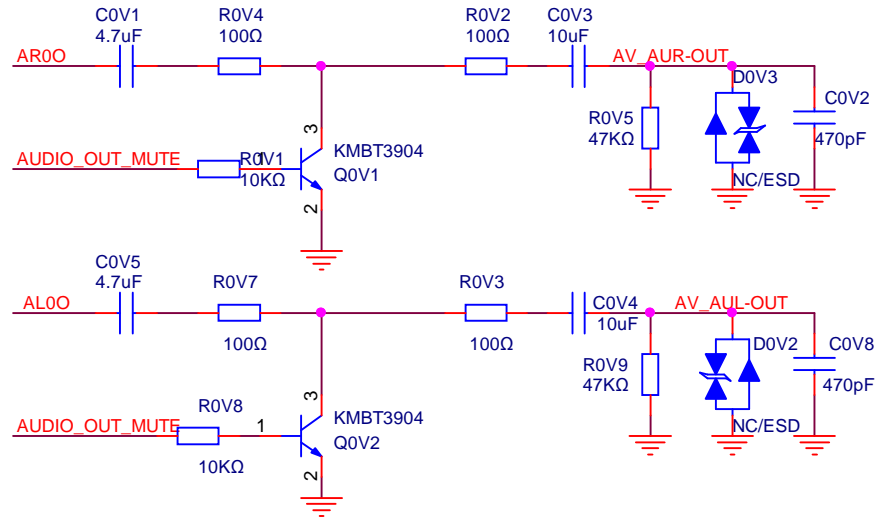
GPIO



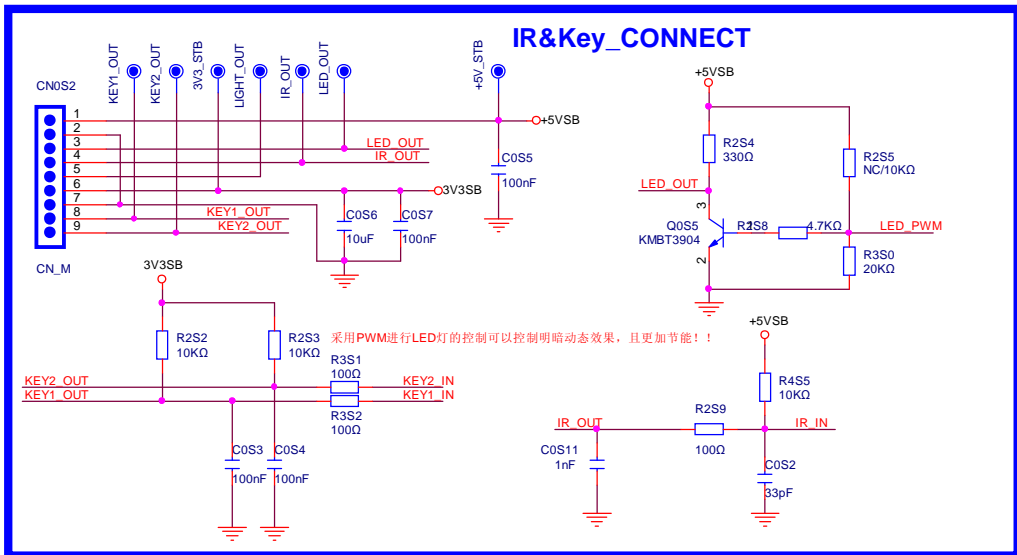
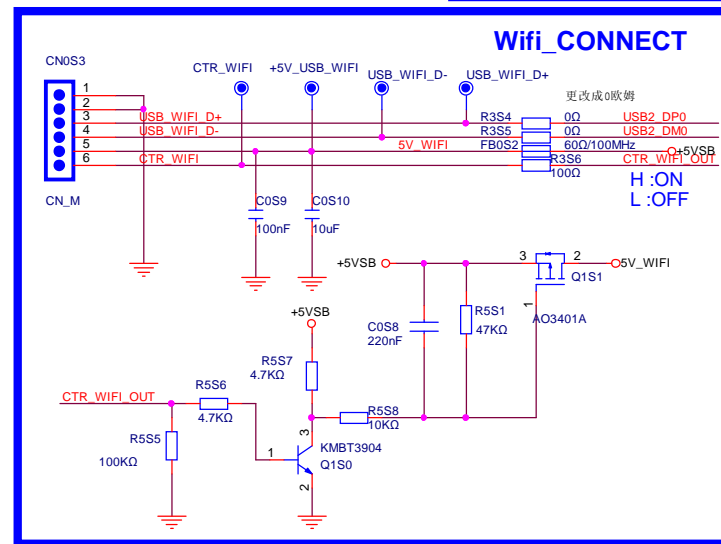
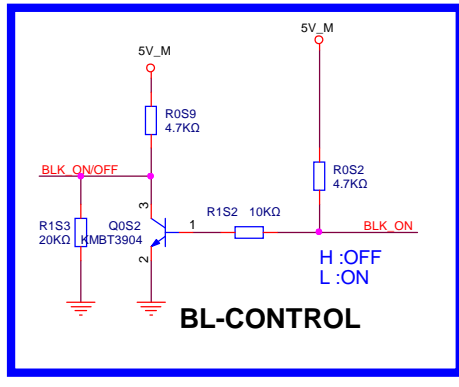
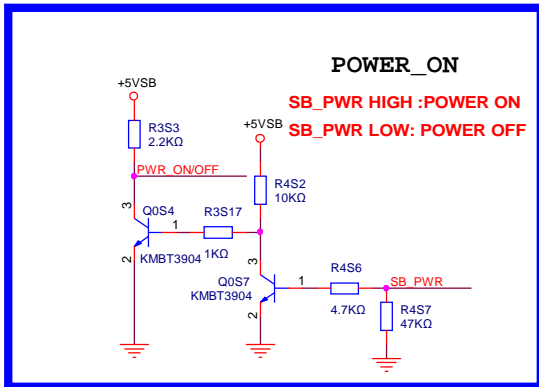
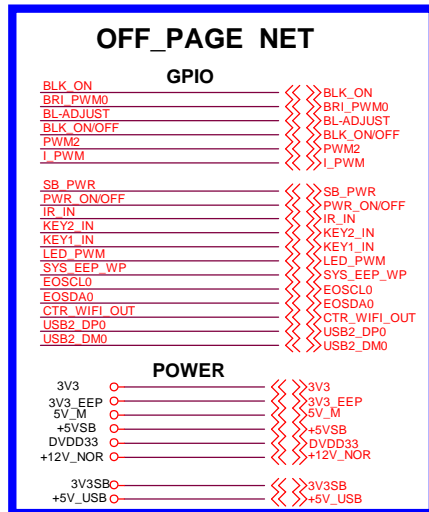
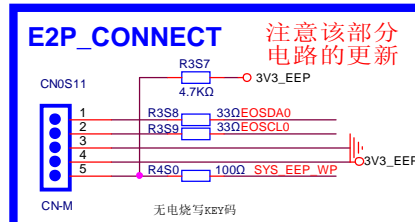
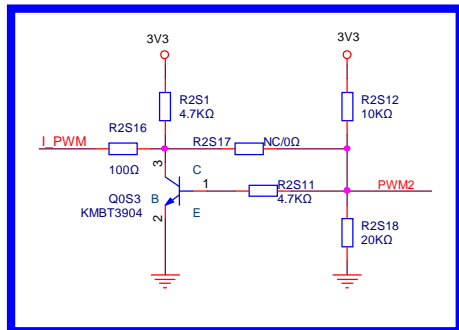
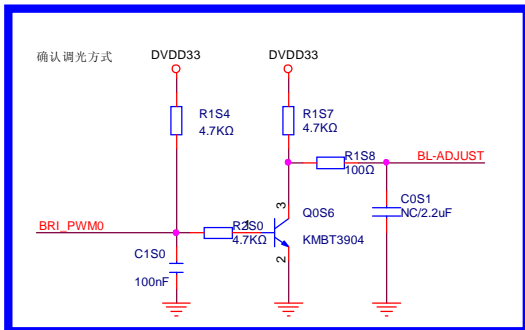
POWER



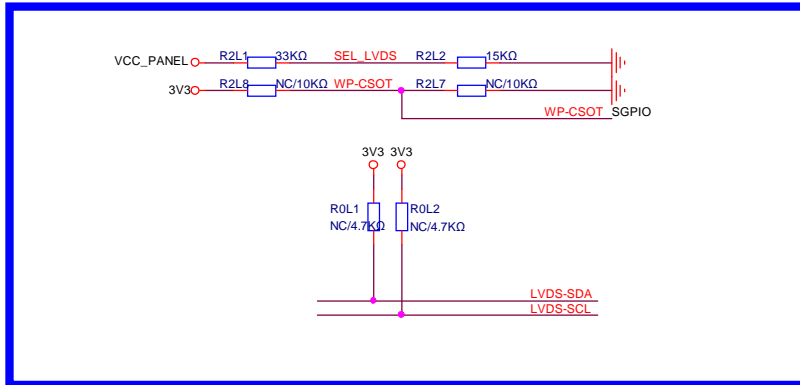
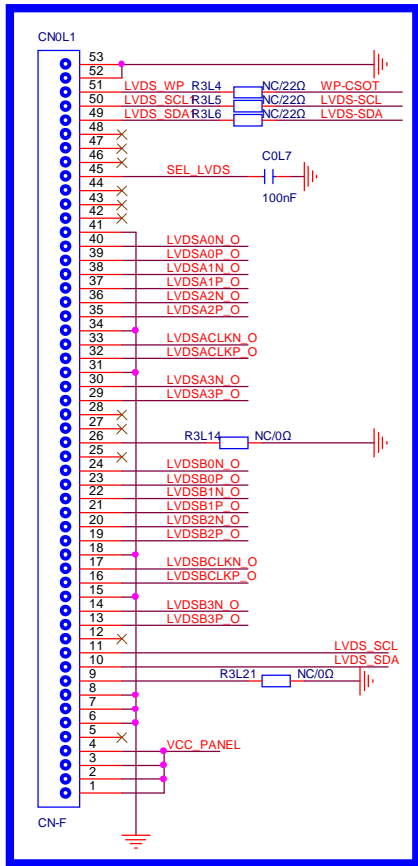
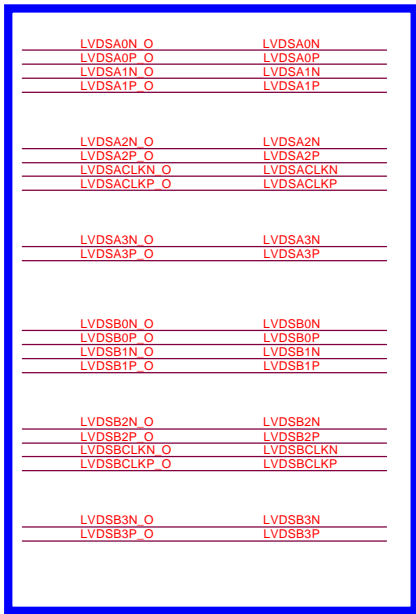
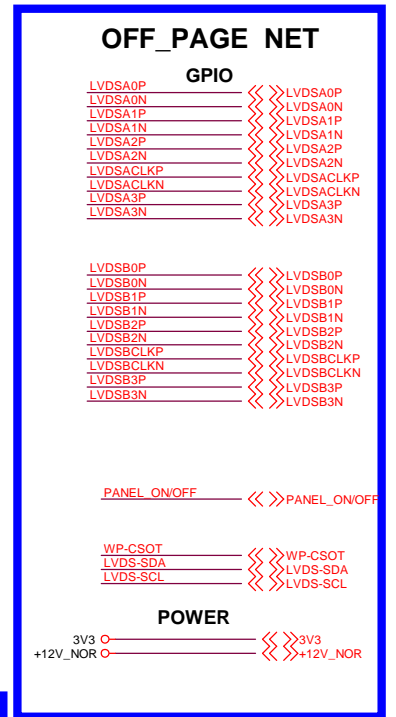
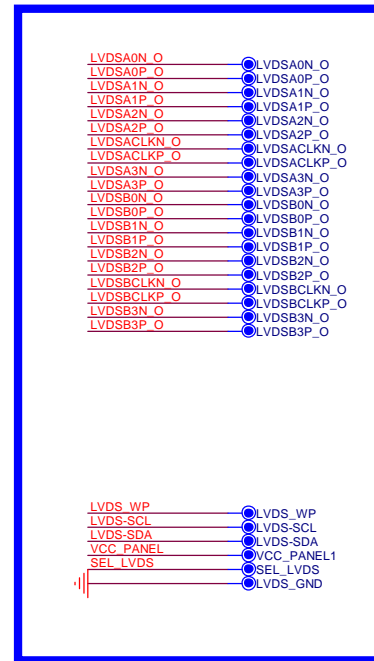
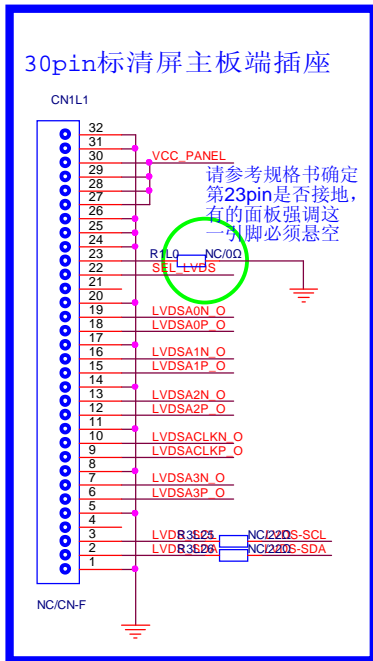
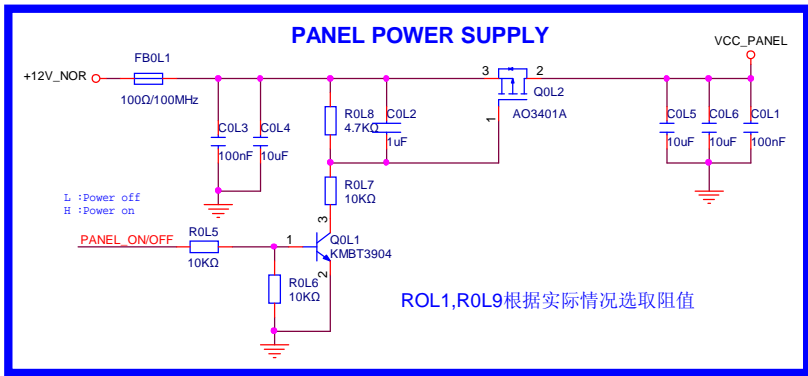
Audio Out



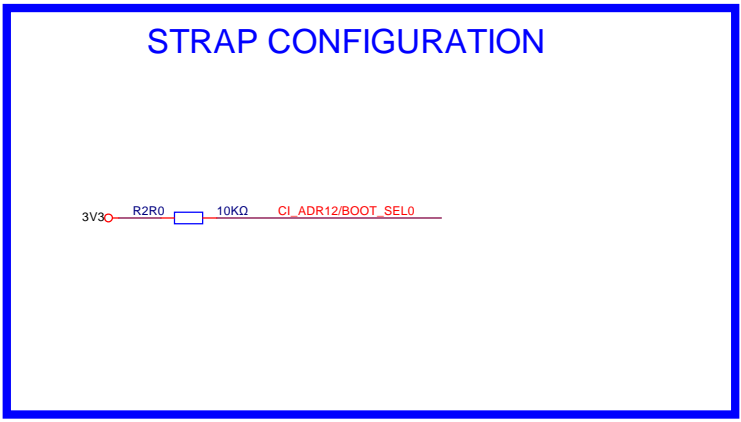
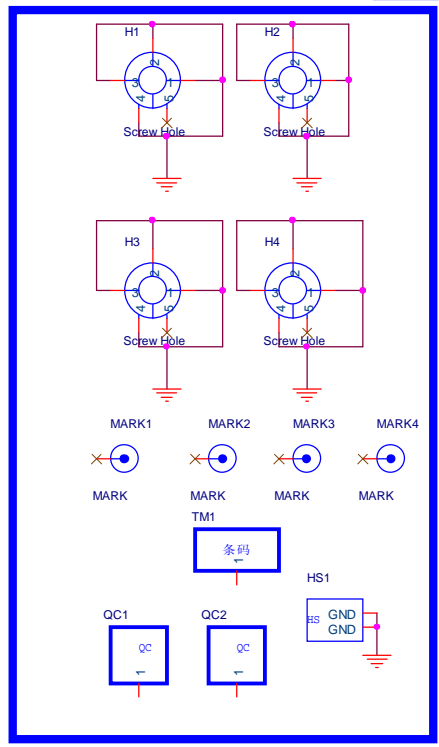
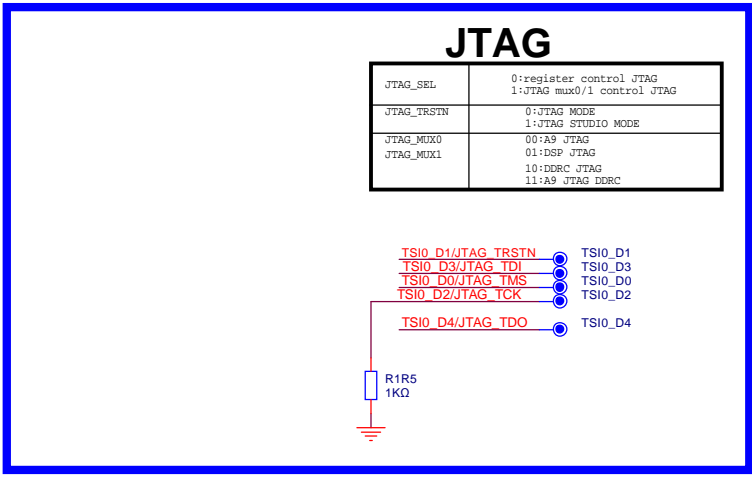
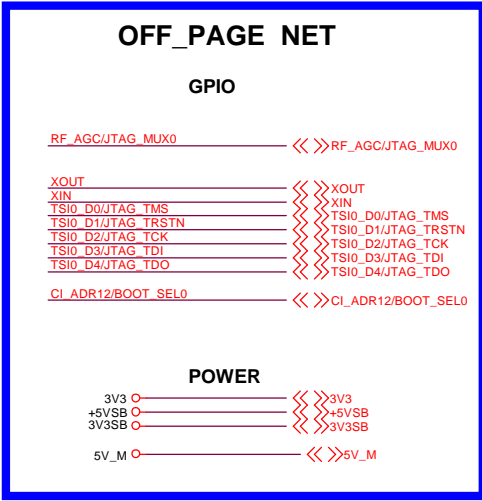
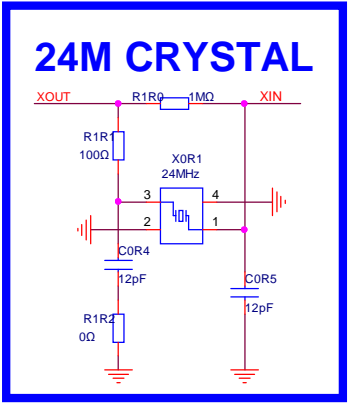
SKYWORTH		研发总部第一研究所	
Title			
V320-40E3500			
Size	Document Number	10_AV_Circuit	Rev
A			1.0
Date:	Wednesday, March 02, 2016	Sheet	10 of 19



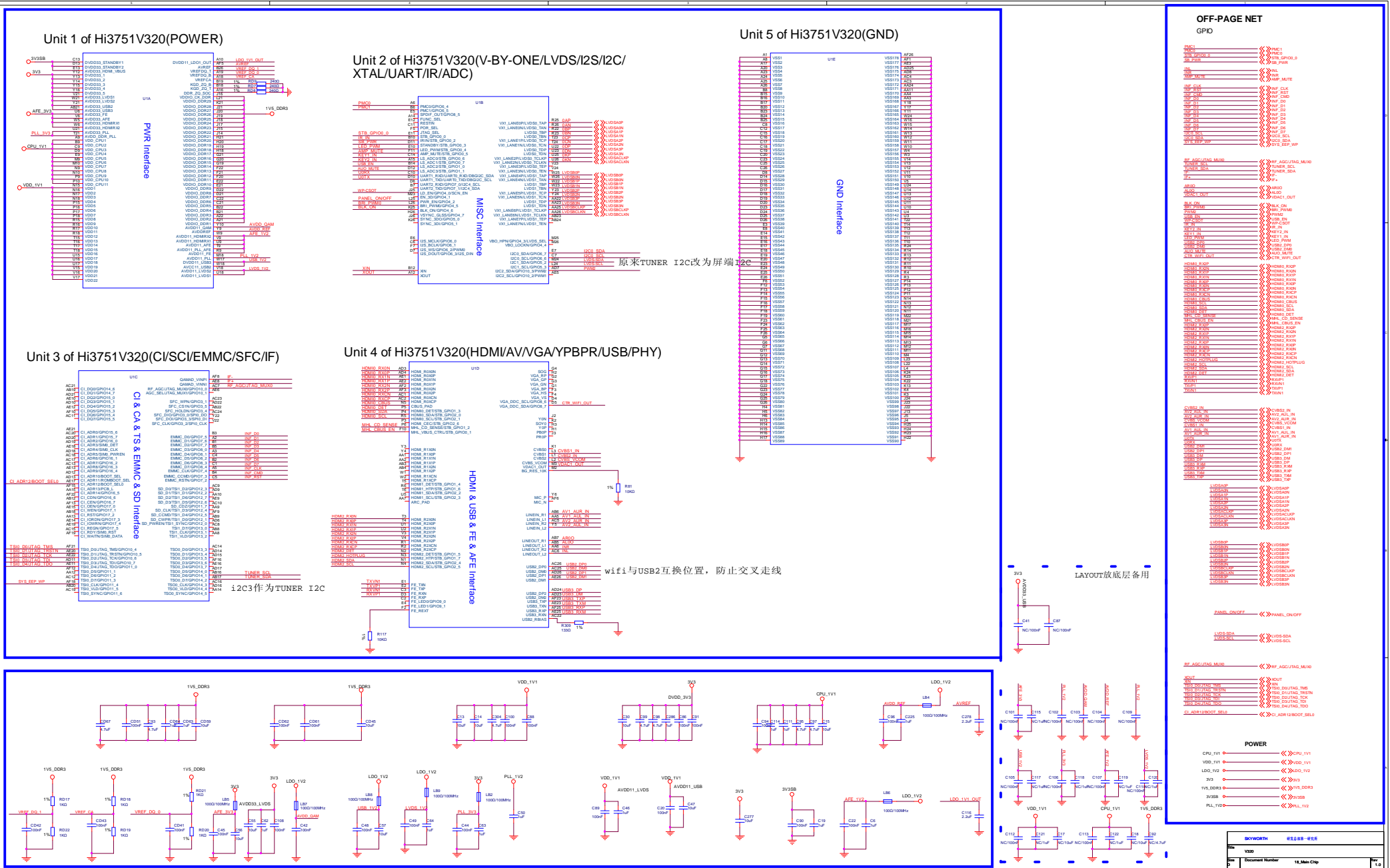
SKYWORTH 研发总部第一研究所			
Title V320-40E3500			
Size B	Document Number	11_Connect Circuit	Rev 1.0
Date:	Wednesday, March 02, 2016	Sheet 11 of 19	



SKYWORTH 研发总部第一研究所	
Title V320-40E3500	
Size B	Document Number 14_LVDS Rev 1.0
Date: Wednesday, March 02, 2016	Sheet 14 of 19



SKYWORTH 研发总部第一研究所	
Title V320	
Size B	Document Number 15_Other Circuit
Date: Wednesday, March 02, 2016	Sheet 15 of 19
	Rev 1.0



原来TUNER I2C改为屏端I2C

wifi与USB2互换位置，防止交叉走线

12C3作为TUNER I2C

LAYOUT放底层备用

Skyworth		88388-888	
Doc No.	Document Number	18_Abs Chip	1.0
Doc Date	Thursday, March 17, 2016	Sheet	18 of 18